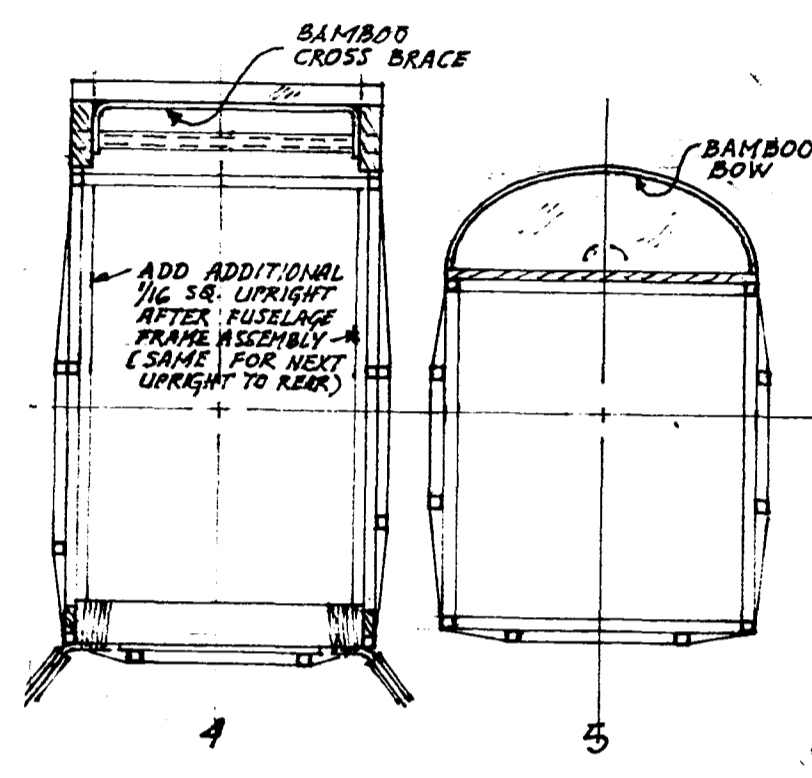
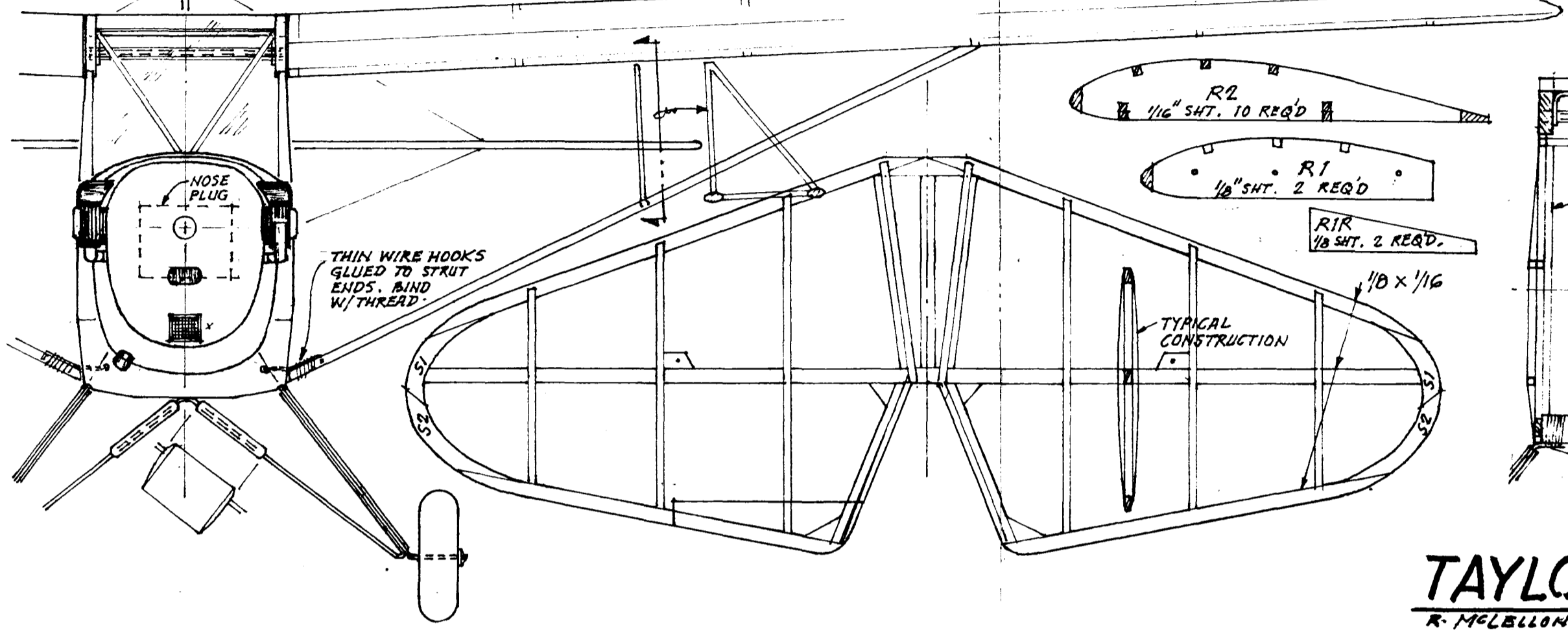
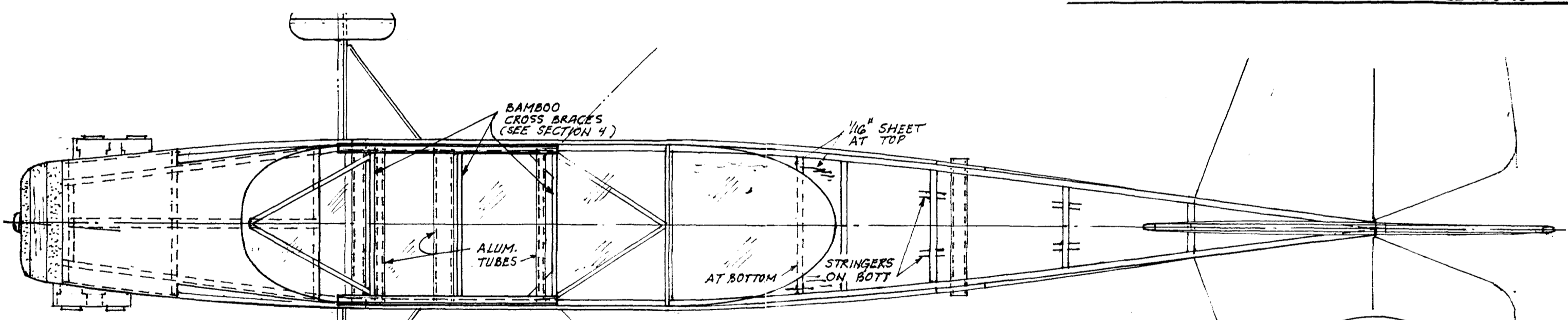


LIAISON INSIGNIA



TAYLORCRAFT L-2
R. McLELLON 22 FEB 48

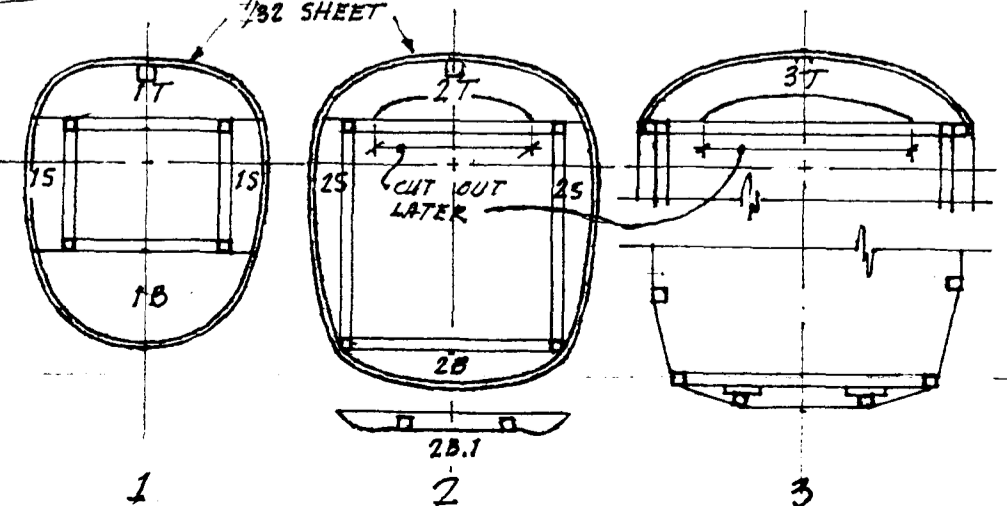
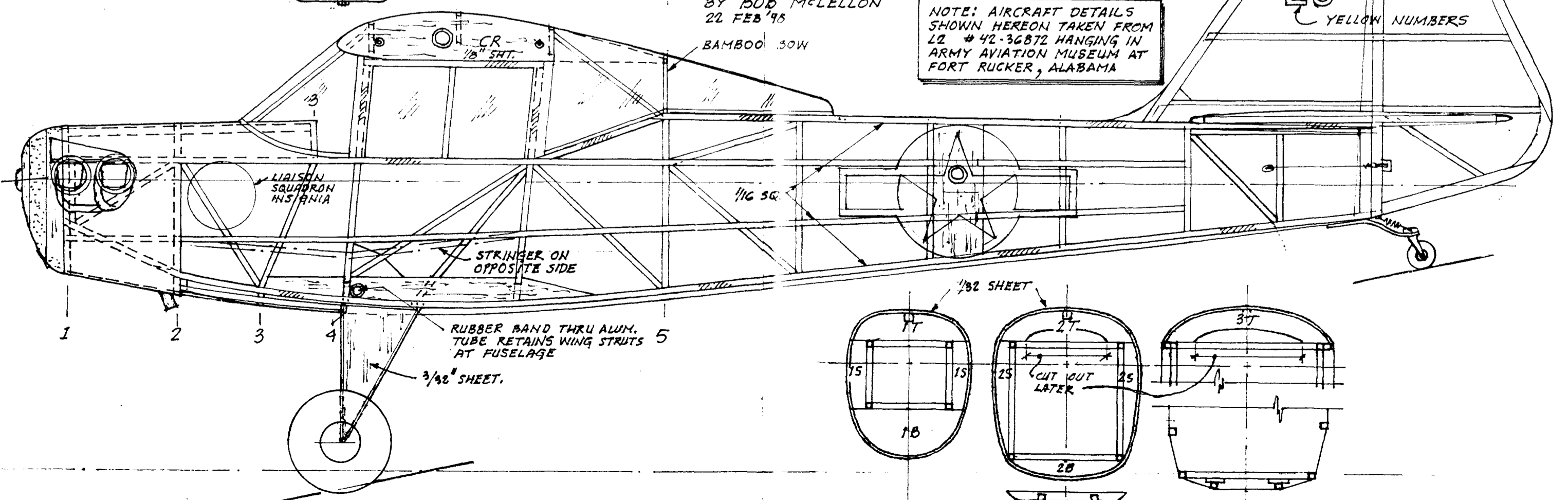


COLOR: AIRCRAFT IS ALL-OVER LIGHT OLIVE DRAB... ALMOST A CARAMEL COLOR, AND GLOSSY

TAYLORCRAFT L-2

BY BOB McLELLON
22 FEB '48

NOTE: AIRCRAFT DETAILS SHOWN HEREON TAKEN FROM L2 #42-36872 HANGING IN ARMY AVIATION MUSEUM AT FORT RUCKER, ALABAMA



(WITH APOLOGIES TO THE OLD MASTER...)
A RE-WORKED EARL STAHL PLAN - 22" WINGSPAN