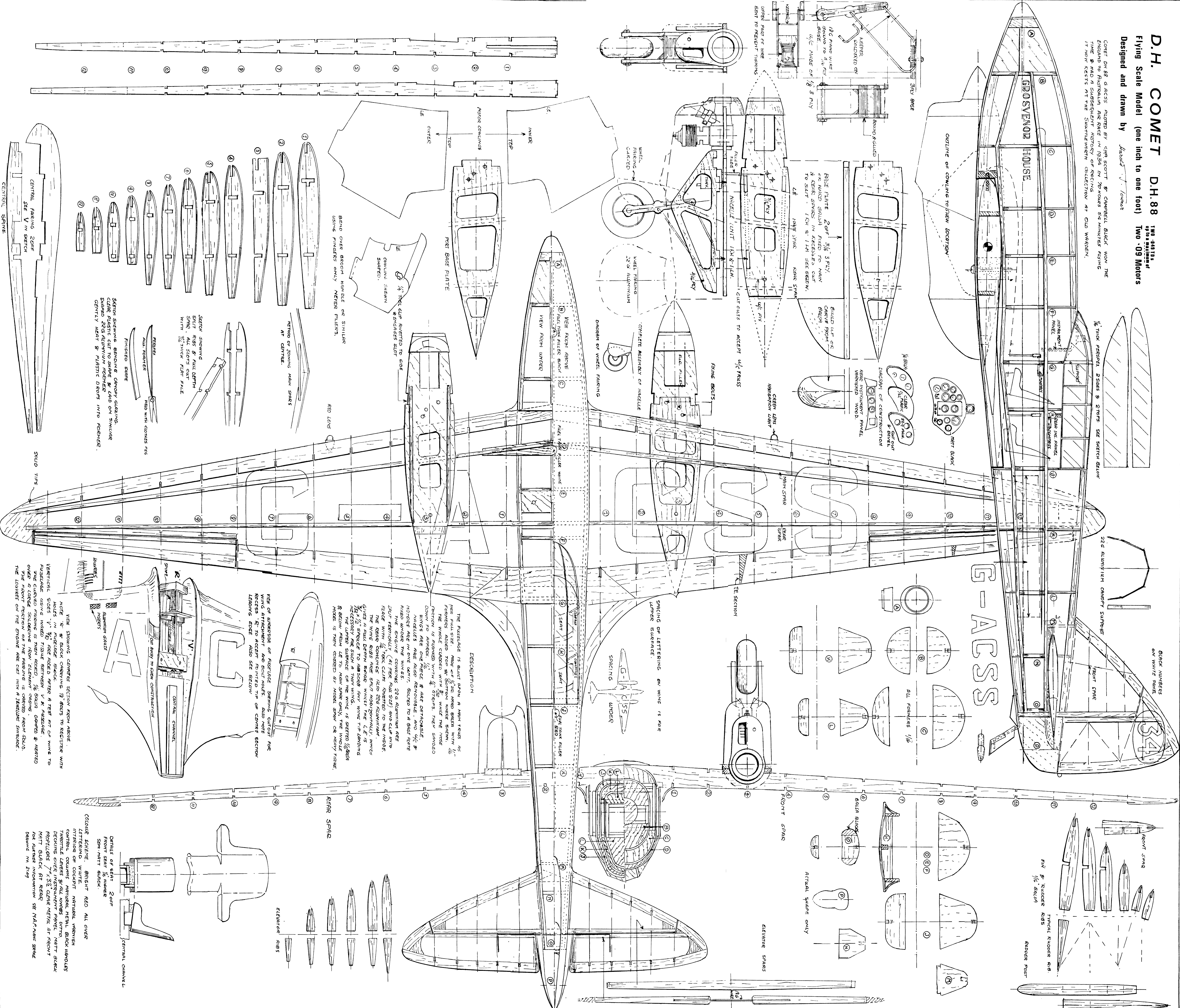
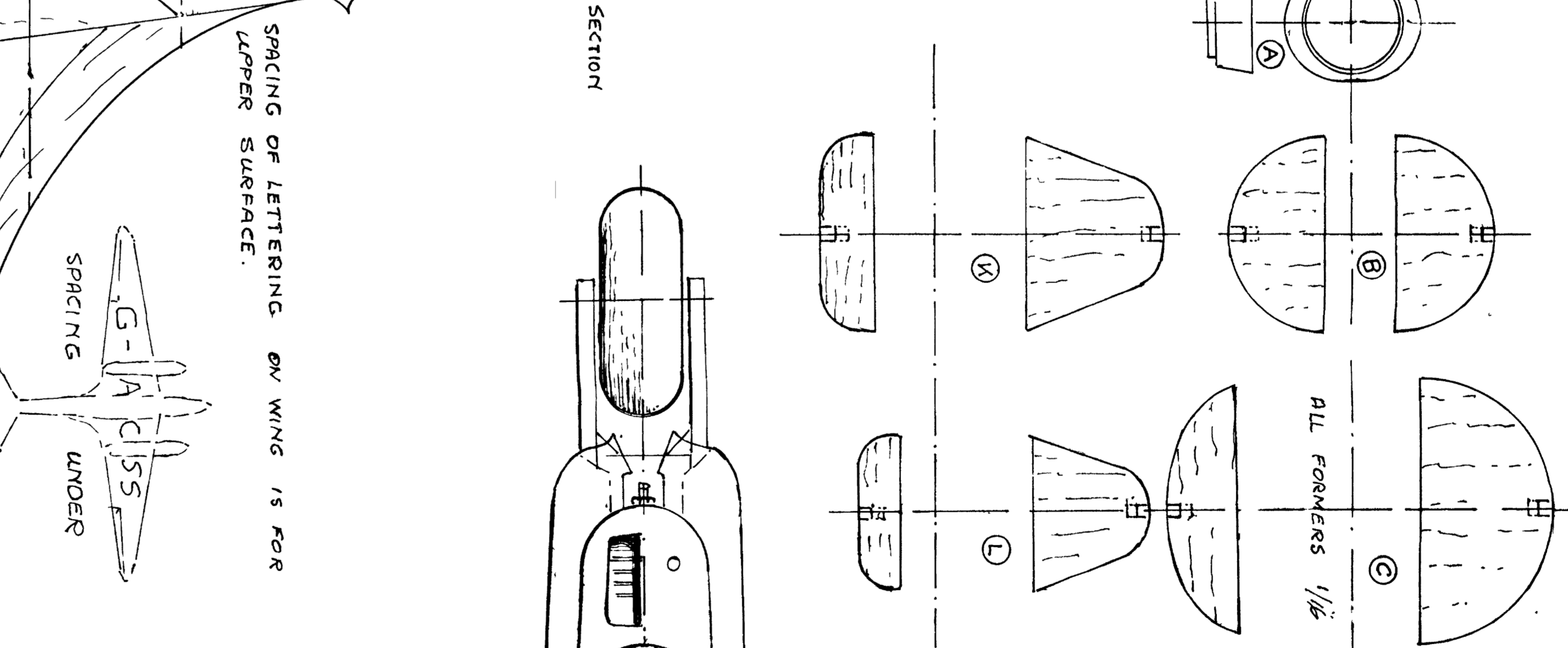
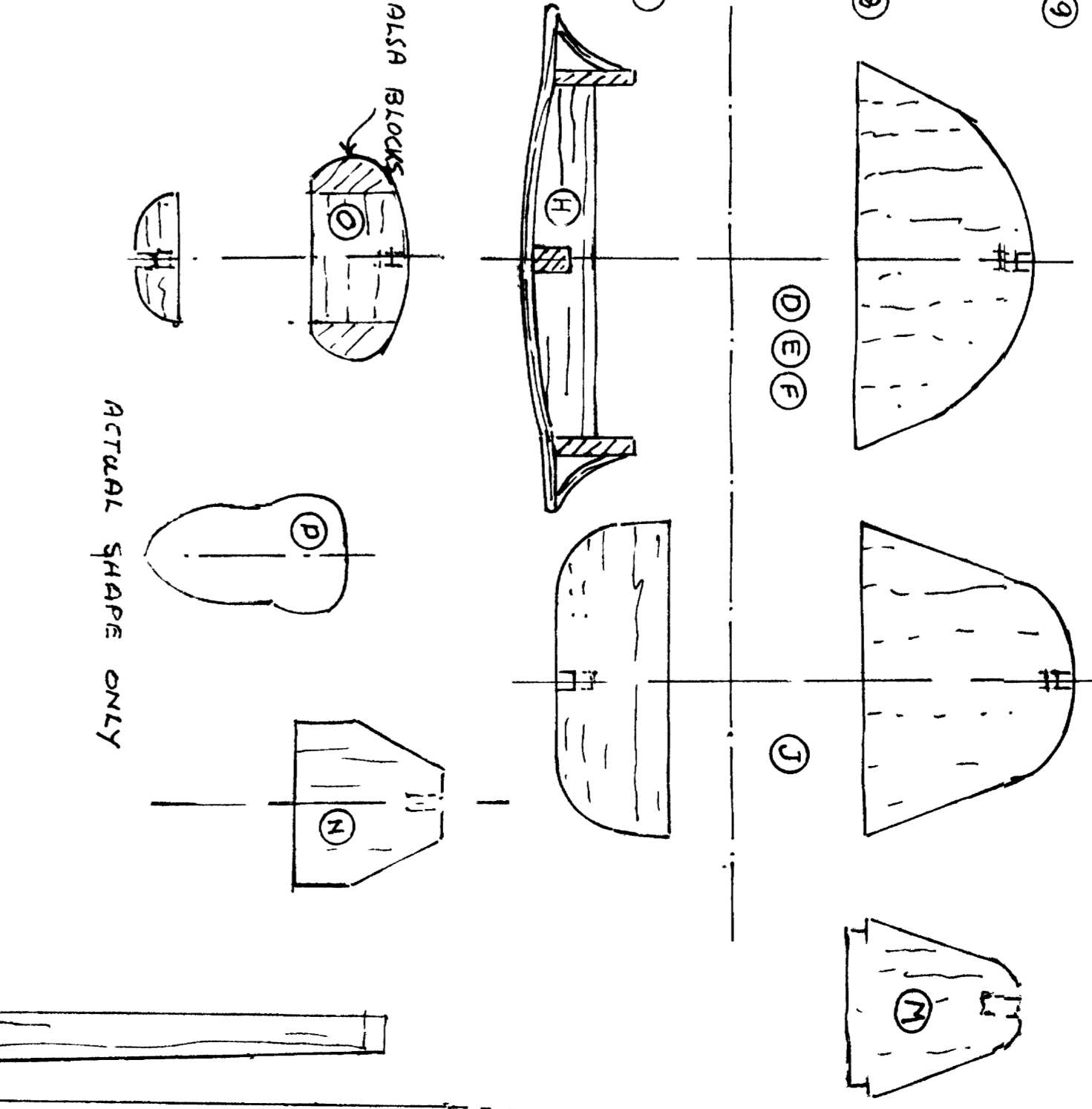
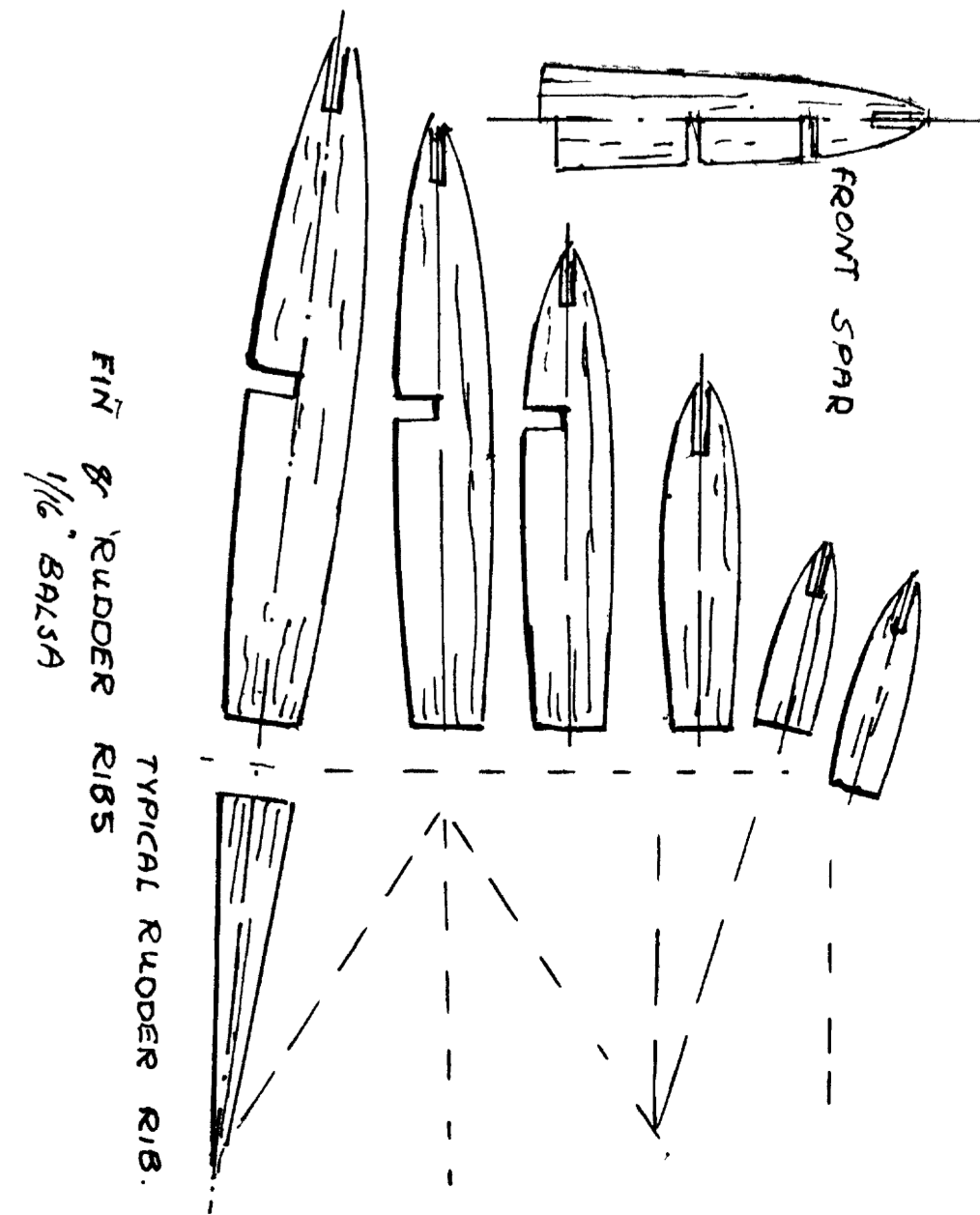


D.H. COMET D.H.88 TWO 04113s
 Flying Scale Model (one inch to one foot) Two .09 Motors
 Designed and drawn by *Howard J. Fox*

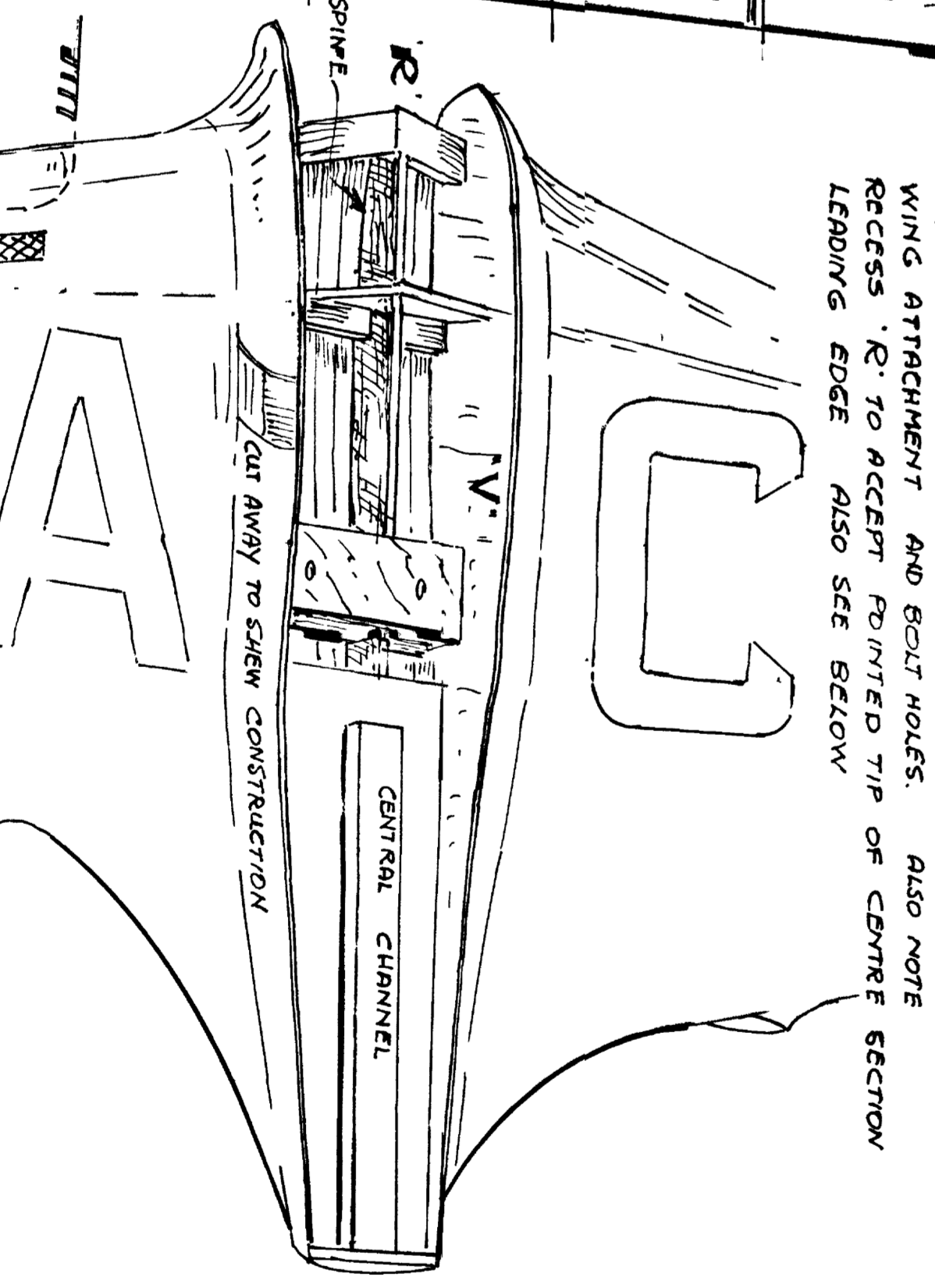
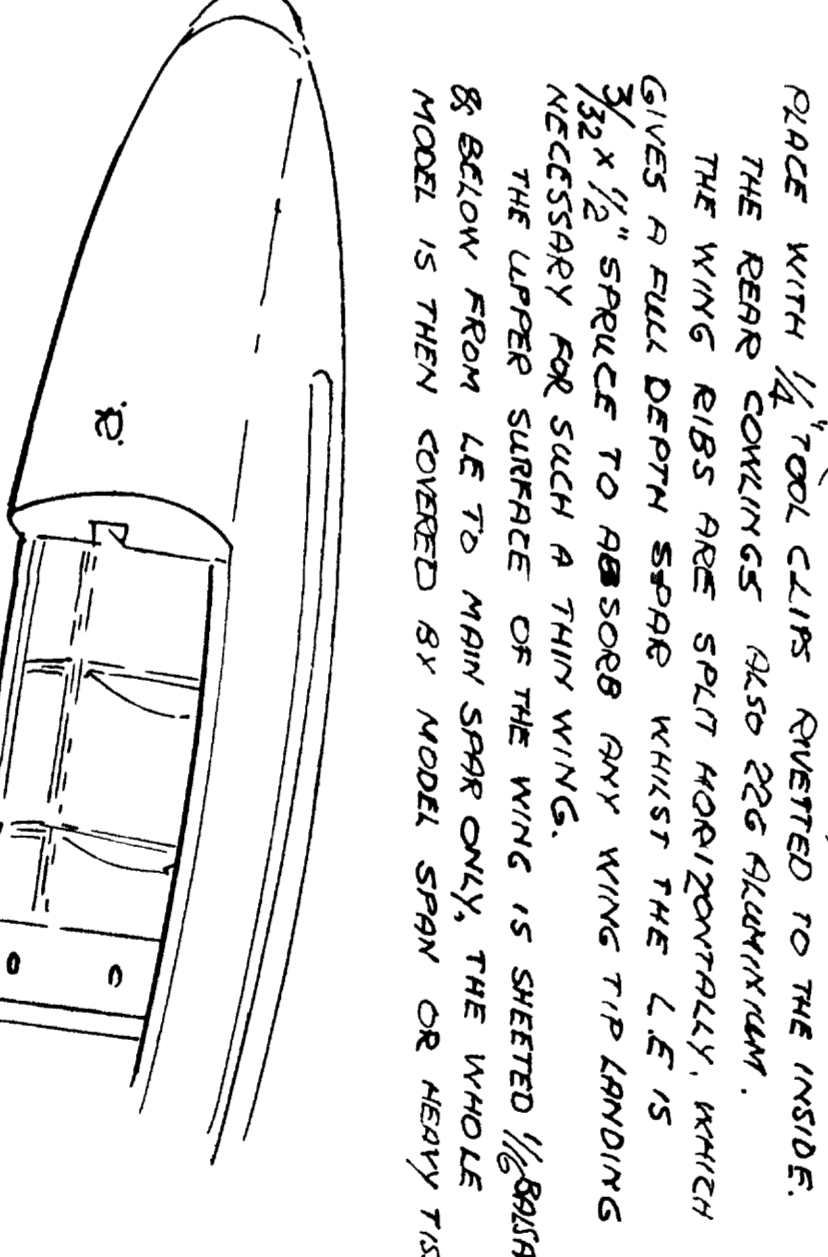
COVER D.H.88 G-ACSS BUILT BY GUN SCOTT & CAMPBELL BLACK WON THE
 PRIZE FOR HULLMAN AIR RACE IN 1934 IN 20 HOURS 53 MINUTES FLYING
 TIME & HAD A SUBSEQUENT HISTORY OF SUCCESS
 IT NOW RESIDES AT THE SHAWNEE MUSEUM COLLECTION 47 CUL WAREHO.



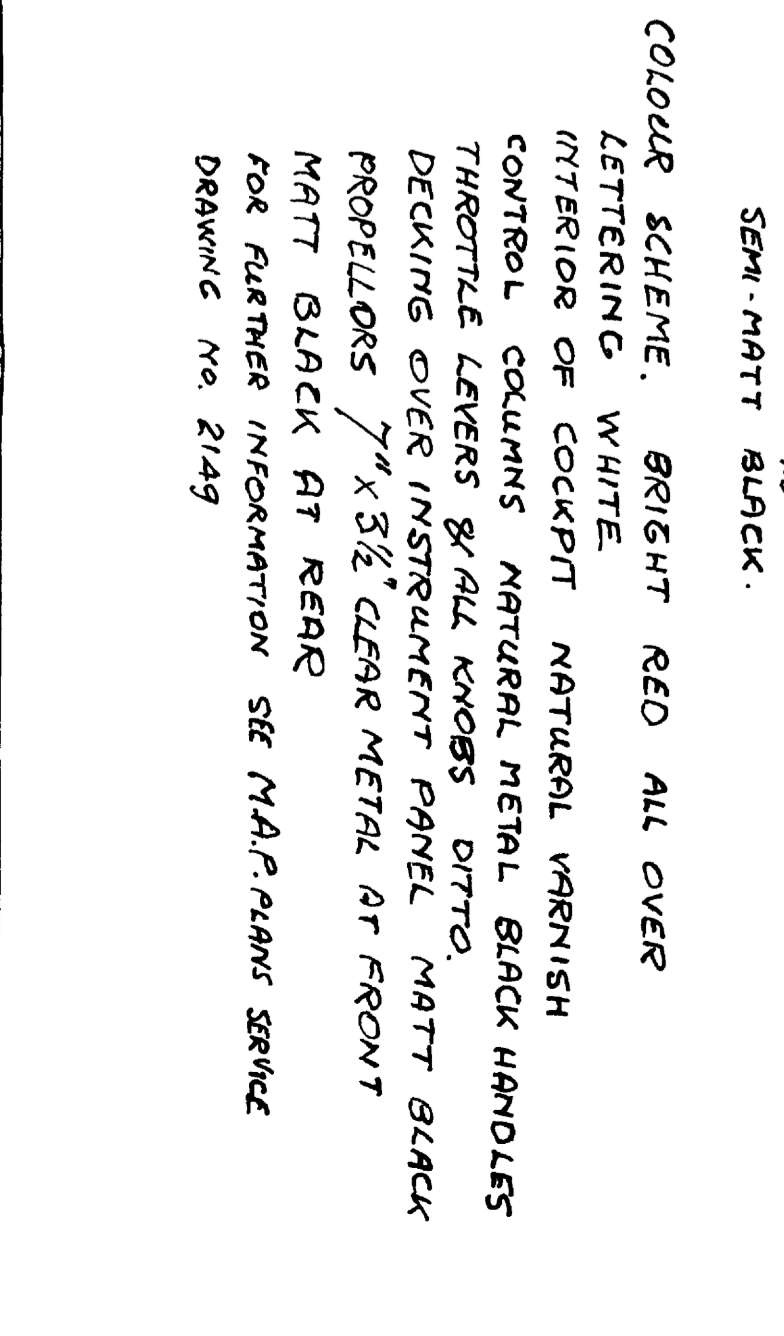
BLACK NUMBERS
 ON WHITE PAINT



DESCRIPTION
 THE FUSELAGE IS BUILT UPON A MAIN TUBE OF
 1/8" ALUMINUM BARS 1/2" X 1/2" X 1/2" LONG WITH
 REINFORCING RIBS TO BE SET FROM WIRE WITH 1/8"
 THE WHOLE CLADDED WITH 20 G ALUMINUM SHEET.
 BOTTOM IS FINISHED WITH 1/4" STRIPS, THEN SIMILAR
 DOWN TO ANNOX. 1/4"
 WINGS ARE ONE PIECE & ARE DETACHABLE.
 NUTS ARE IN ONE PART, SELECTED TO A GOOD SIZE
 THE ENGINE COUPLING, 20 G ALUMINUM ARE
 SET VERTICALLY (AT PER FULL SET) AND CLIP WITH
 THE GEAR COUPLING ALSO 20 G ALUMINUM.
 THE WING RIBS ARE SET HORIZONTALLY WHICH
 GIVES A FULL DEPTH SPOOR WHICH THE LE IS
 1/2" X 1/2" STRIP TO MAKE SURE THE WING IS SETTED
 NEARLY VERTICAL SURFACE OF THE WING IS SETTED 1/8"
 & BELOW FROM LE TO MAIN SPAR ONLY THE WHOLE
 MODEL IS THEN COVERED BY MODEL SHEET OR VERY THIN



VIEW SHOWING CENTRE SECTION FROM ABOVE
 NOTE 'R' & BLACK CHANGING 1/8" BOLTS TO REGISTER WITH
 HOLES IN FUSELAGE BLACK.
 VERTICAL SIDES 'V' 3/8" ARE RIGID AFTER A TEST FIT OF WIRE TO
 FUSELAGE USING WOODEN TUBES BETWEEN 'V' & FUSELAGE.
 THE CURVED FINISHING IS THEN ADDED. 1/8" BOLD DOWNWARD & HEATED
 OVER A LARGE SCALDING IRON ELEMENT CHANGING
 THE FRONT SECTION OF THE FINISHING IS COVERED FROM SCALD.
 THE TAILBOOM ON THE ENGINE ARE CUT WITH A TAPERED SHAPED.



COLOR SCHEME: BRIGHT RED ALL OVER
 LETTERING OR DECALCIPT NATURAL WERNISH
 FITTING OF DECALCIPT NATURAL WERNISH
 THIRTEEN LINES WITH VERTICAL BLACK RIBBONS
 DECALCIPT COUS INSTRUMENT PANEL NATT BLACK
 REPELLERS 7" X 3 1/2" CLEAR METAL AT FRONT
 NATT BLACK AT REAR
 FOR FURTHER INFORMATION SEE 'M.A.P.' DRAWING
 DRAWING No 2149

