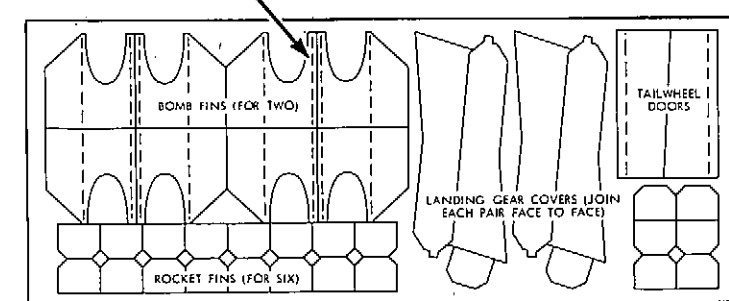
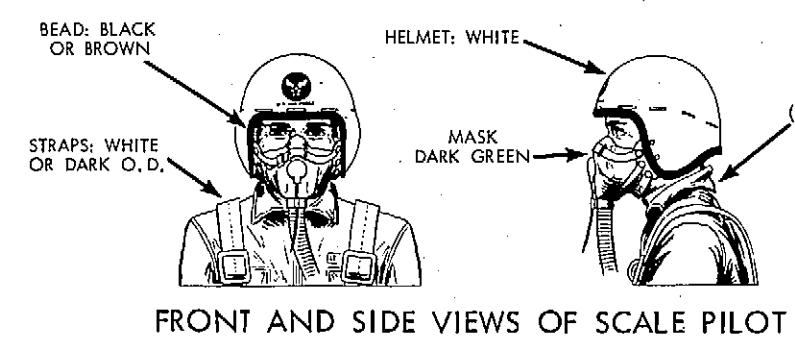


KEY TO PARTS ON PLYWOOD SHEET

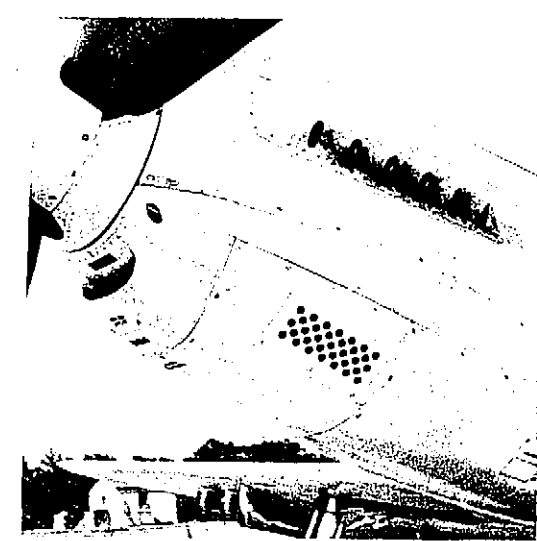
COMPLETE CUTS WITH A RAZOR BLADE & BEND ALONG DOTTED LINES WITH LONG NOSE PLIERS



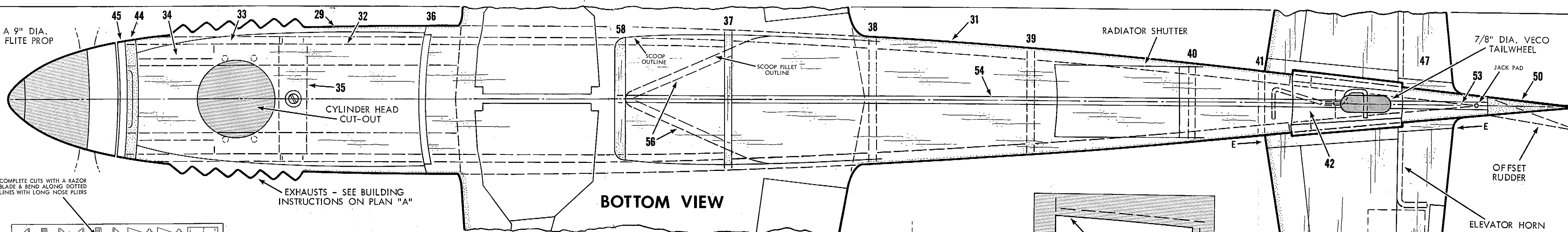
KEY TO PARTS ON FIBRE SHEET



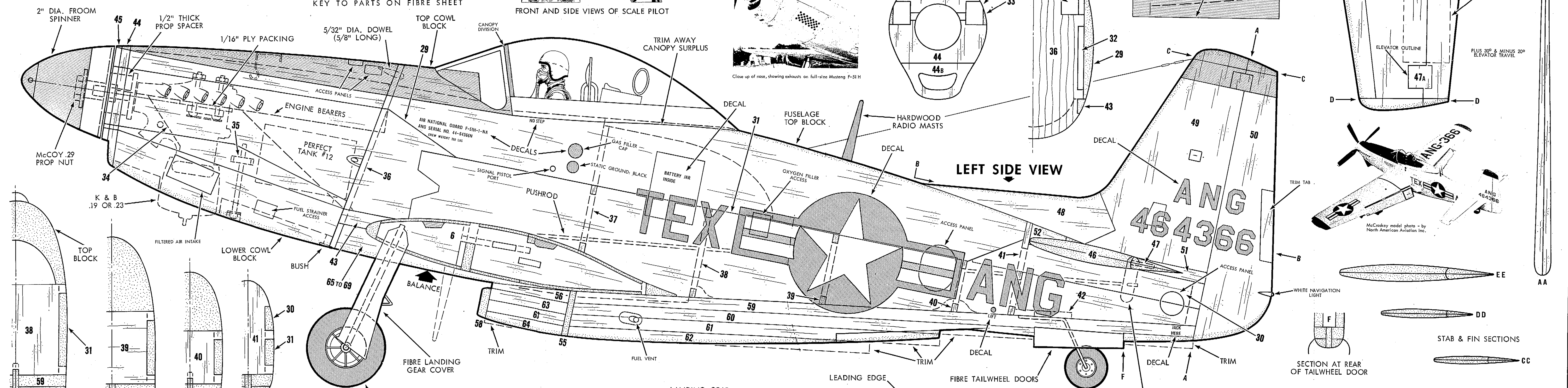
FRONT AND SIDE VIEWS OF SCALE PILOT



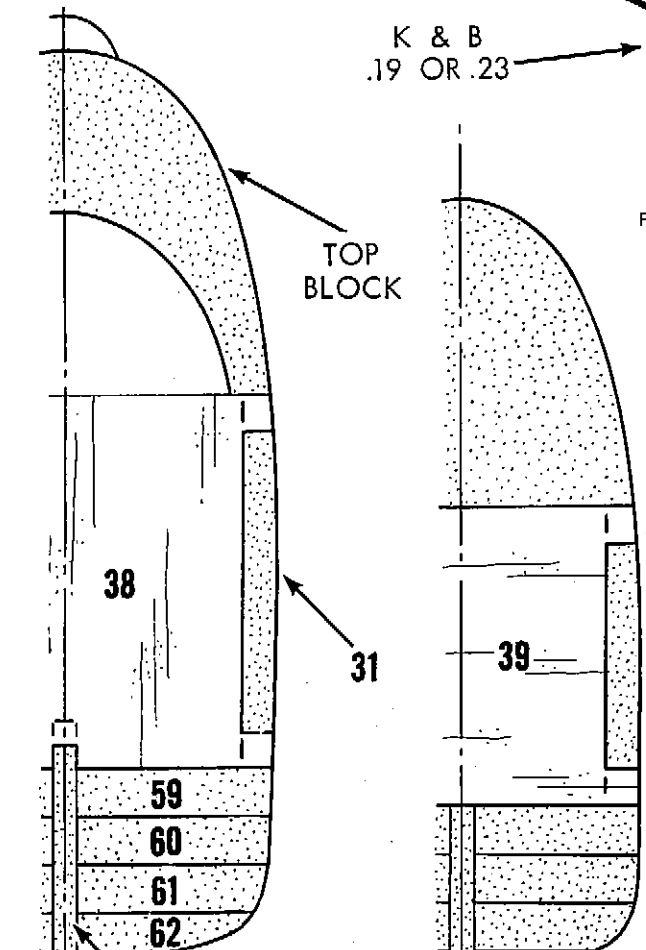
Close up of nose, showing exhausts on full-size Mustang F-51 H



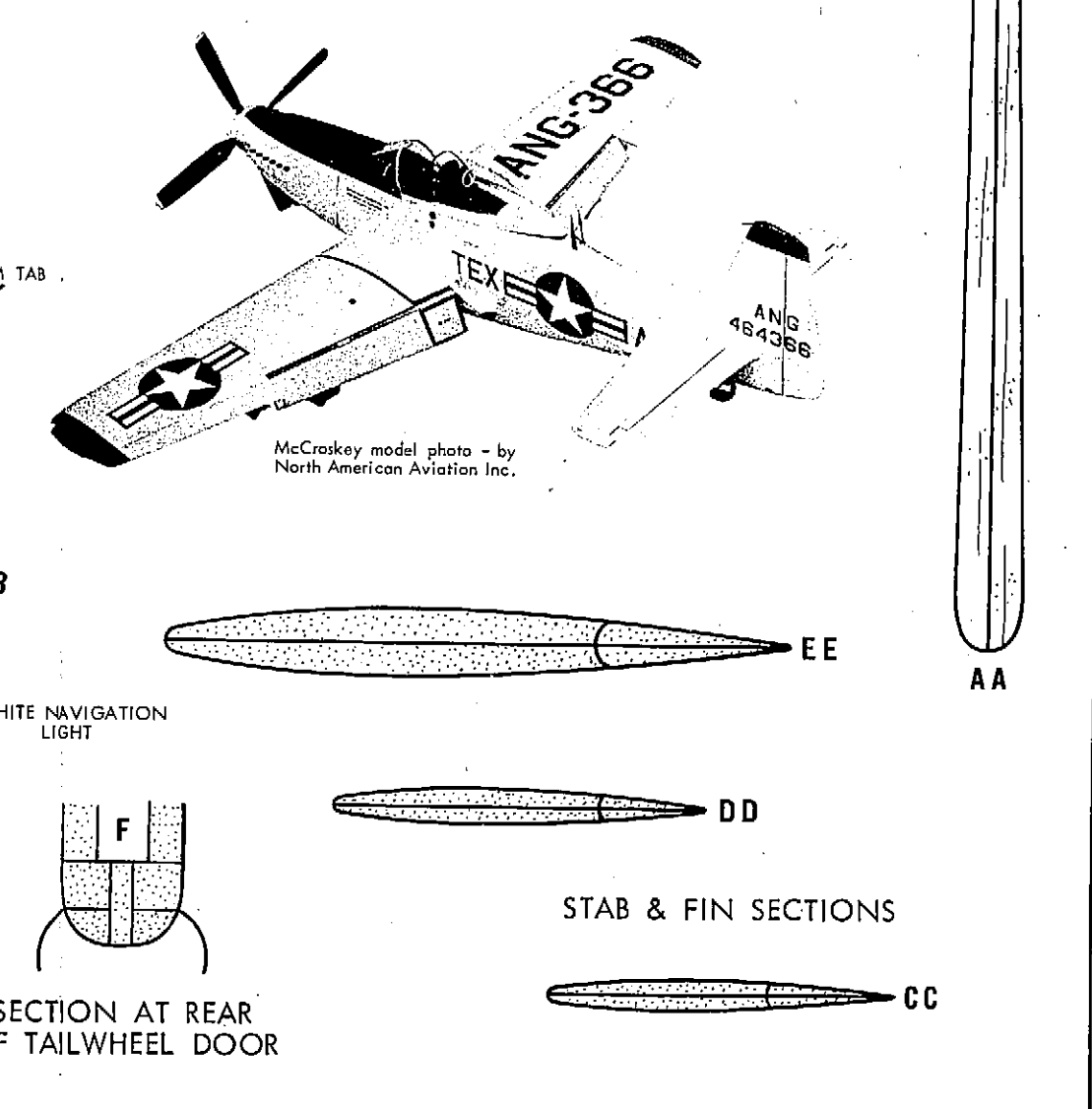
BOTTOM VIEW



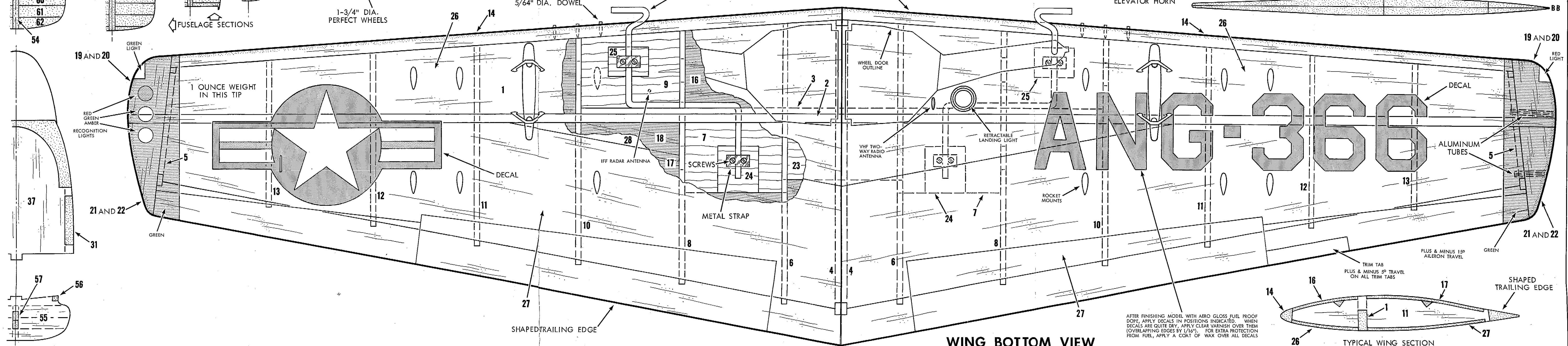
LEFT SIDE VIEW



FUSELAGE SECTIONS



TYPICAL WING SECTION



WING BOTTOM VIEW

AFTER FINISHING MODEL WITH AERO GLOSS FUEL PROOF DOPE, APPLY DECALS IN POSITIONS INDICATED. WHEN DECALS ARE QUITE DRY, APPLY CLEAR VARNISH OVER THEM (OVERLAPPING EDGES BY 1/16"). FOR EXTRA PROTECTION FROM FUEL, APPLY A COAT OF WAX OVER ALL DECALS

