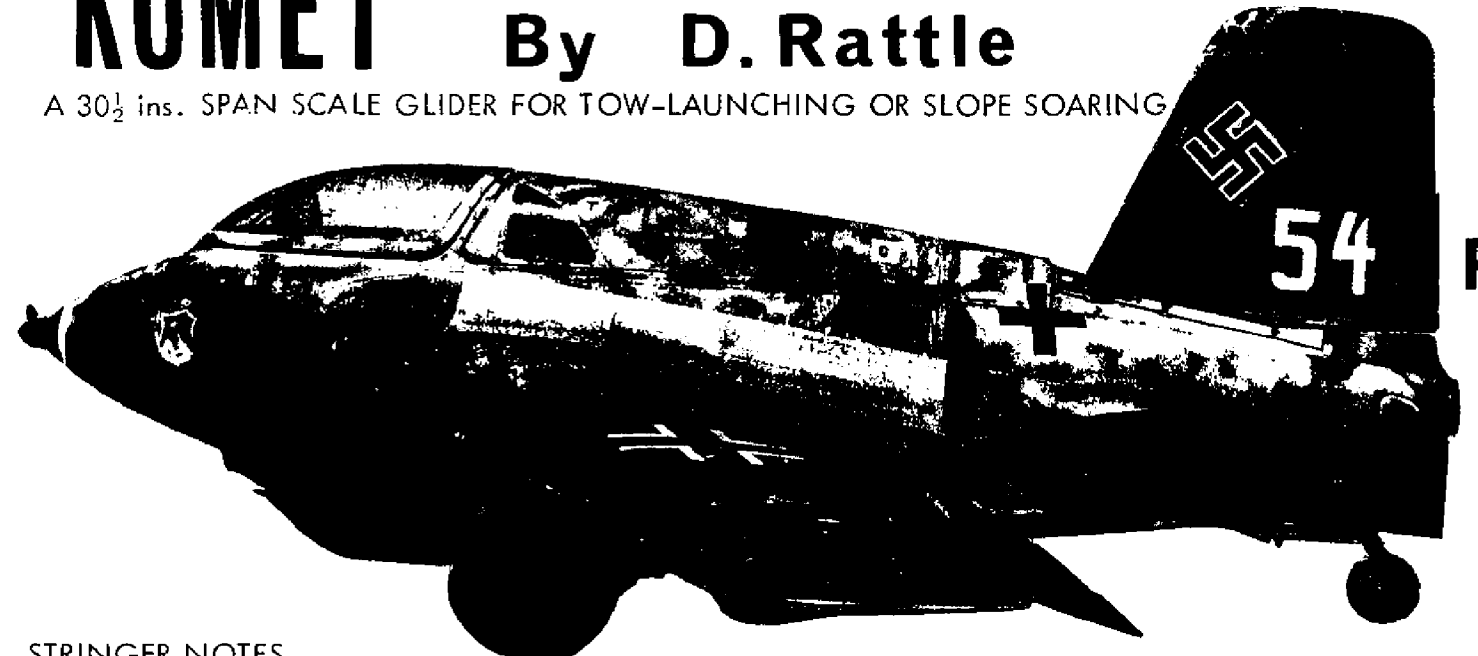


MESSERSCHMITT Me 163

'KOMET' By D. Rattle

A 30½ ins. SPAN SCALE GLIDER FOR TOW-LAUNCHING OR SLOPE SOARING



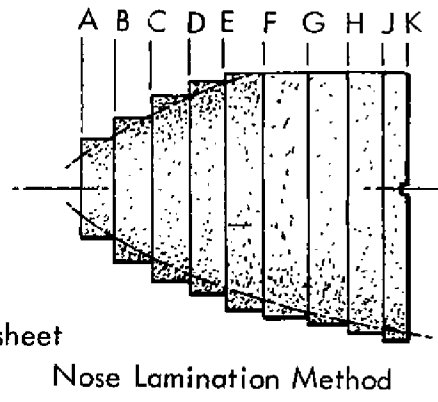
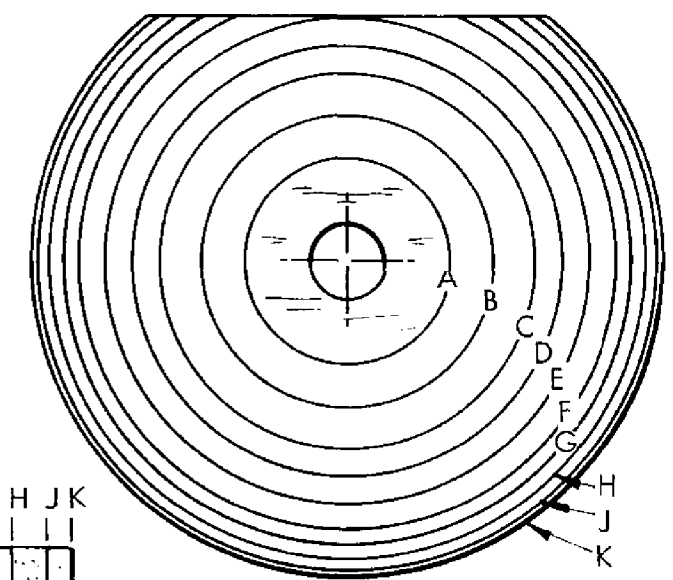
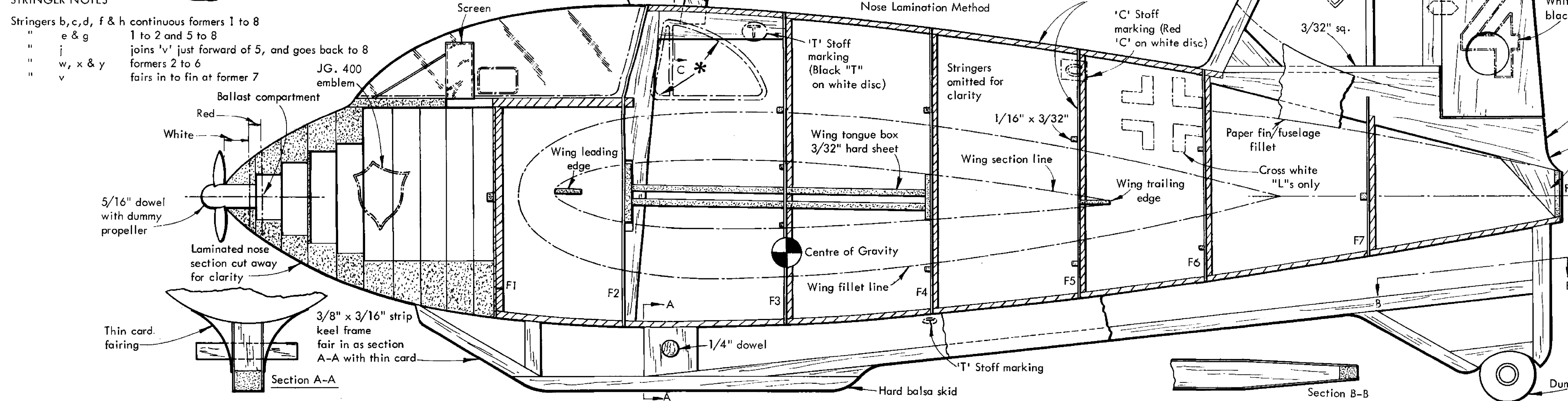
Copyright: Model Aeronautical Press, 13-35 Bridge Street, Hemel Hempstead, Herts.

MATERIALS REQUIRED
Balsa
 36" x 2" x 3/8" medium grade
 36" x 2" x 1/16" medium to hard
 36" x 2" x 3/32" hard grade
 (Strip sheet for the stringers etc.)

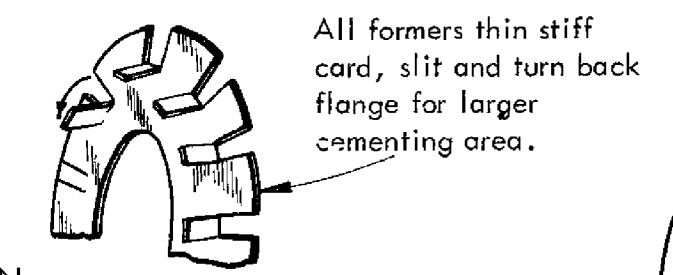
Miscellaneous
 One sheet each of card (Bristol Board) .010" and .020" thick. Some stiff paper, one sq. ft. of .020" acetate or a bubble hood & 6" x 6" x 1/32" plywood.

PLAN VALUE
3/6

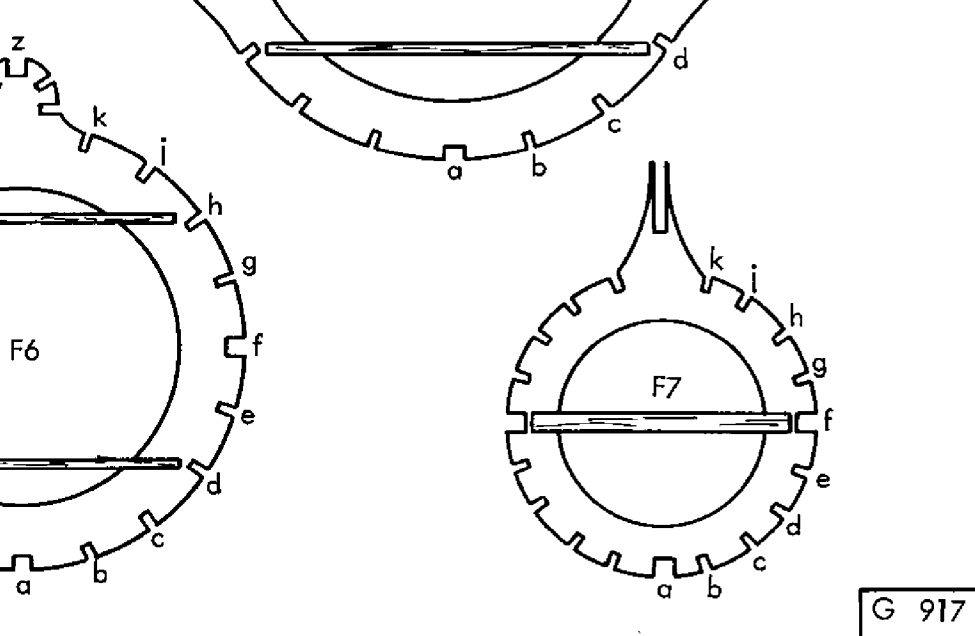
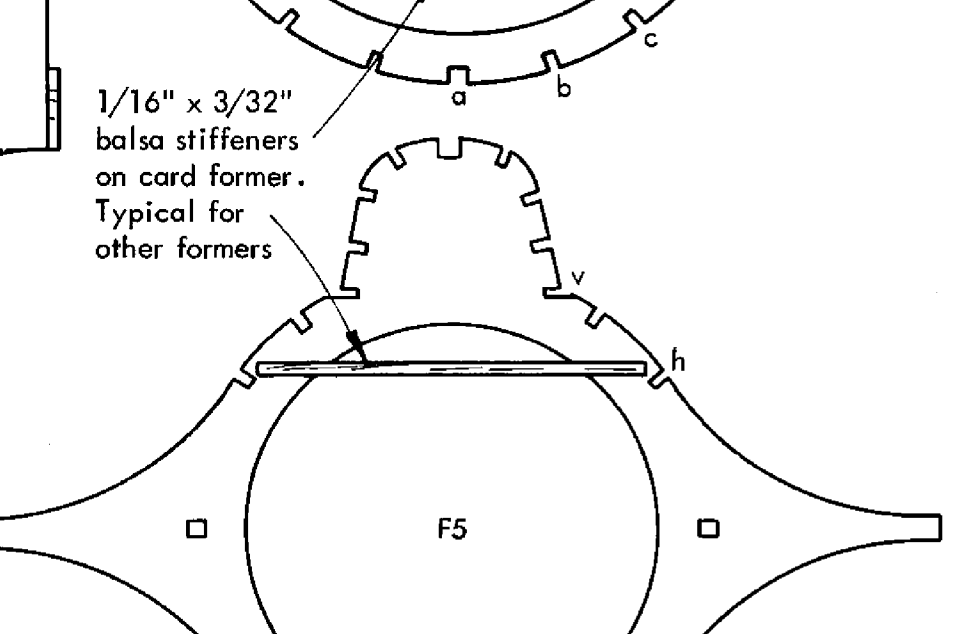
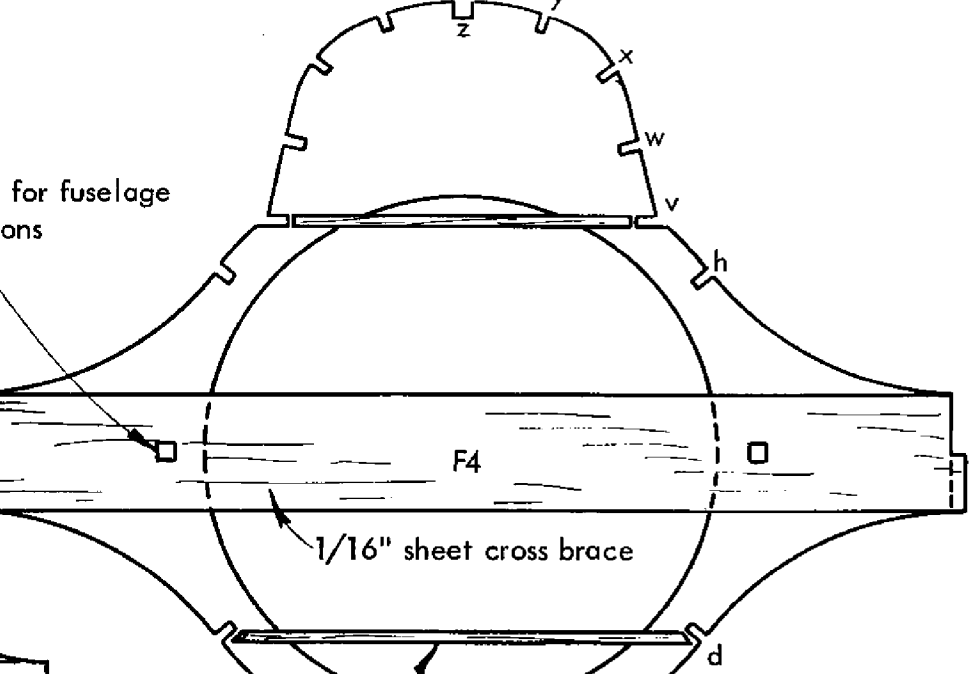
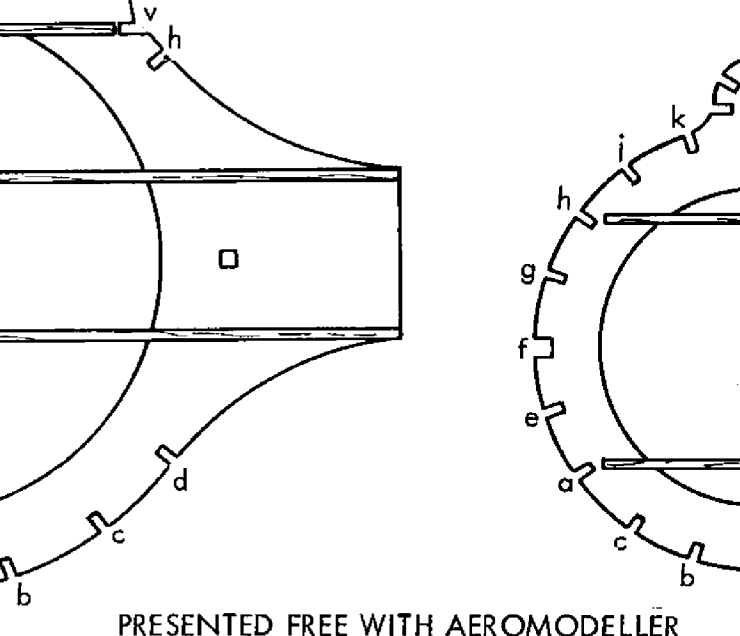
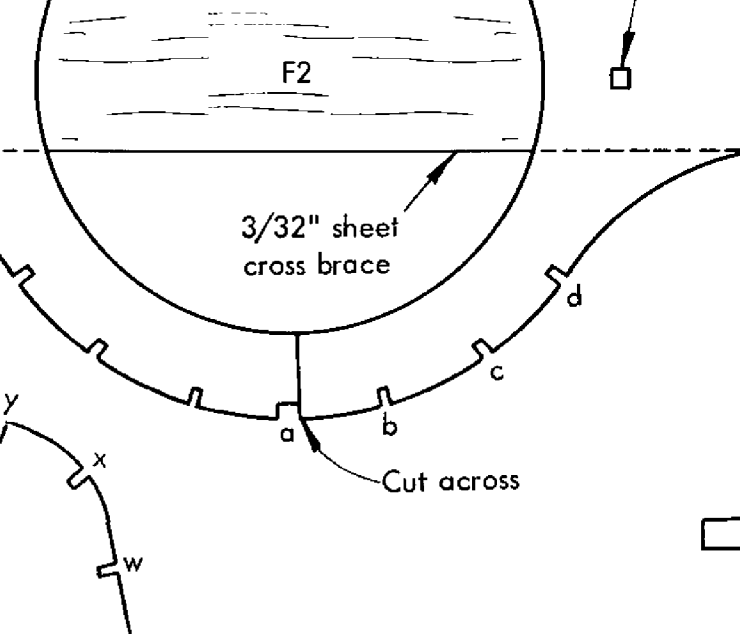
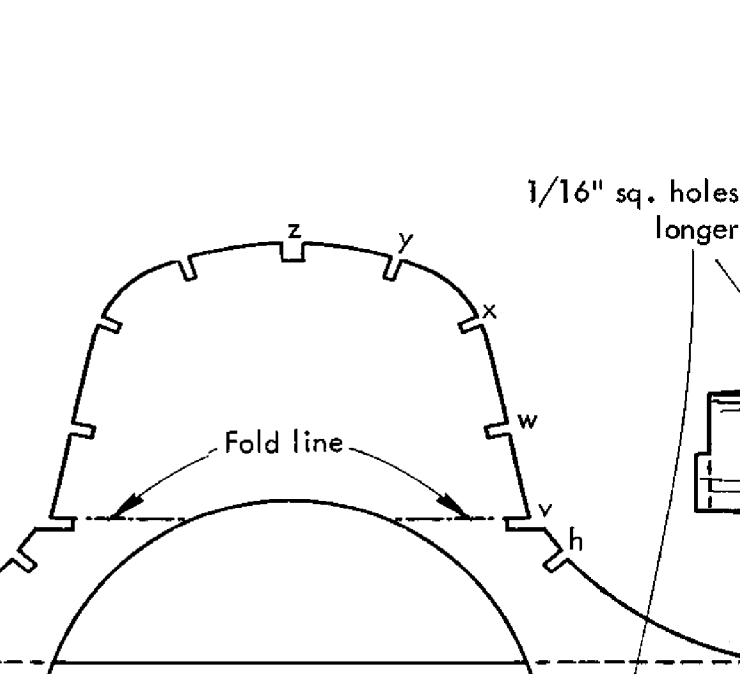
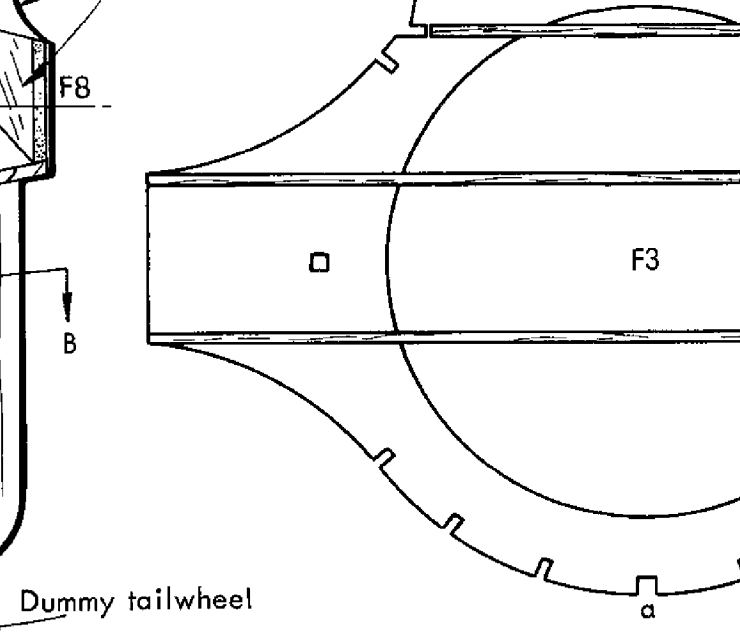
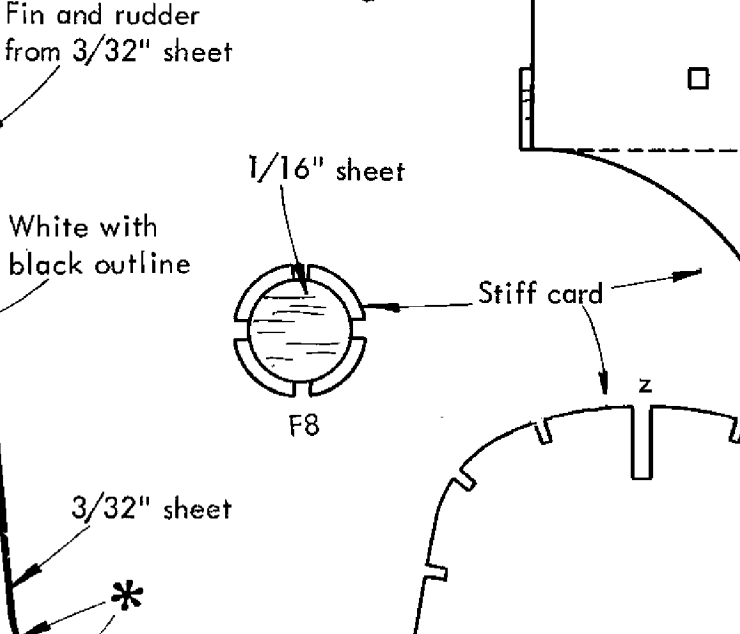
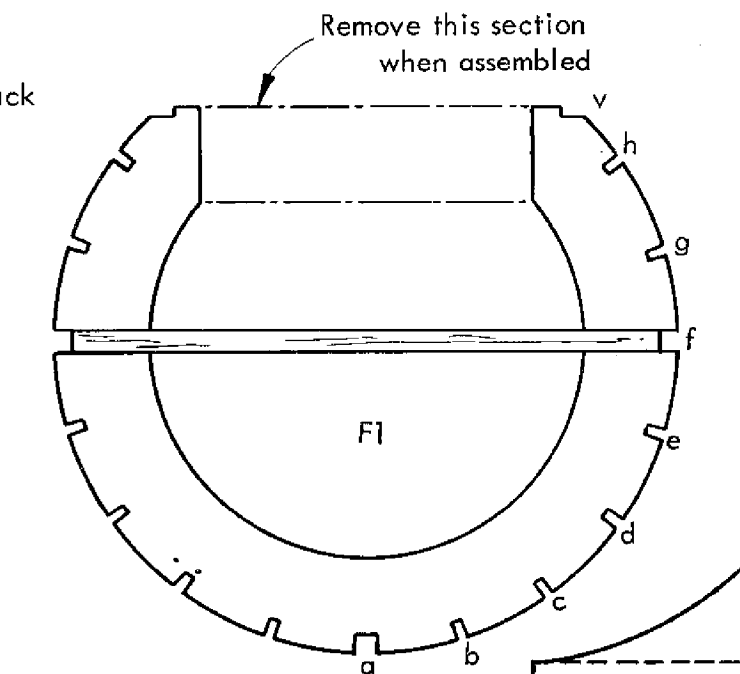
STRINGER NOTES
 Stringers b, c, d, f & h continuous formers 1 to 8
 " e & g 1 to 2 and 5 to 8
 " i joins 'v' just forward of 5, and goes back to 8
 " w, x & y formers 2 to 6
 " v fairs in to fin at former 7



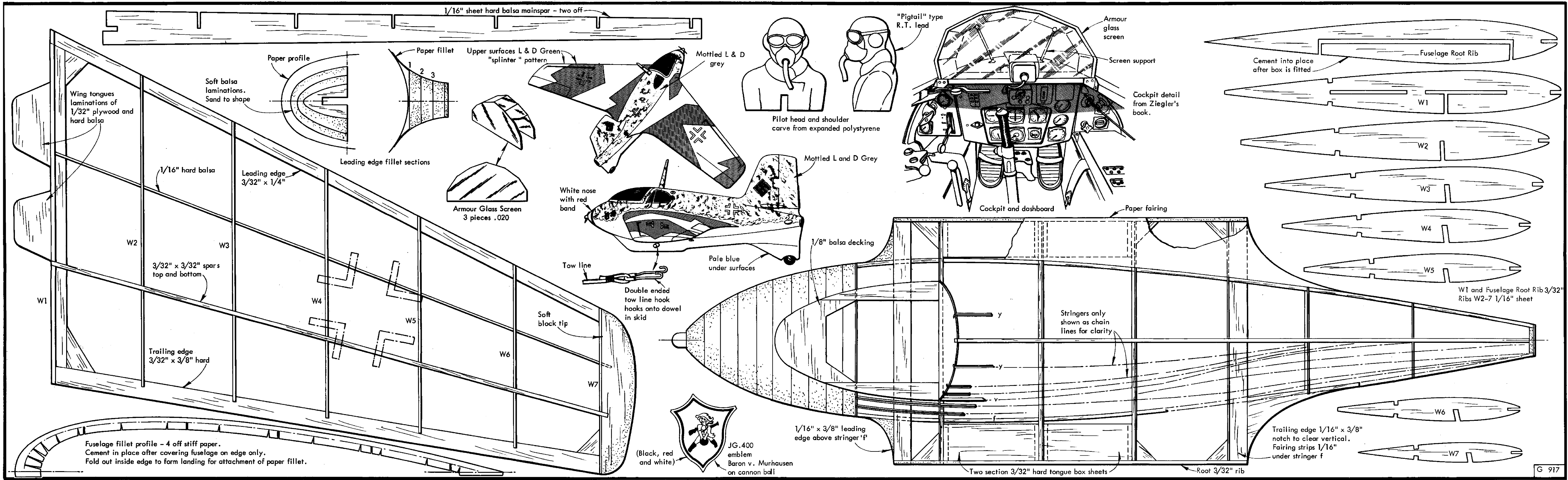
Full size Nose Formers A - J from 3/8" sheet, K-1/4"
 Note:- Construct basic framework shown shaded and sections marked * over the plan.



All formers thin stiff card, slit and turn back flange for larger cementing area.



PRESENTED FREE WITH AEROMODELLER



1/16" sheet hard balsa mainspar - two off

Paper profile

Paper fillet

Upper surfaces L & D Green
"splinter" pattern

Mottled L & D grey

"Pigtail" type
R.T. lead

Armour glass screen

Screen support

Cockpit detail
from Ziegler's
book.

Cement into place
after box is fitted

Fuselage Root Rib

W1

W2

W3

W4

W5

W1 and Fuselage Root Rib 3/32"
Ribs W2-7 1/16" sheet

Wing tongues
laminations of
1/32" plywood and
hard balsa

Soft balsa
laminations.
Sand to shape

1/16" hard balsa

Leading edge
3/32" x 1/4"

Leading edge fillet sections

Armour Glass Screen
3 pieces .020

White nose
with red
band

Pale blue
under surfaces

1/8" balsa decking

Cockpit and dashboard

Paper fairing

Tow line

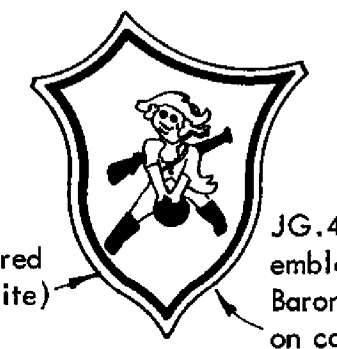
Double ended
tow line hook
hooks onto dowel
in skid

Soft
black tip

Stringers only
shown as chain
lines for clarity

Fuselage fillet profile - 4 off stiff paper.
Cement in place after covering fuselage on edge only.
Fold out inside edge to form landing for attachment of paper fillet.

(Black, red
and white)



JG. 400
emblem
Baron v. Murhausen
on cannon ball

1/16" x 3/8" leading
edge above stringer 'f'

Two section 3/32" hard tongue box sheets

Root 3/32" rib

Trailing edge 1/16" x 3/8"
notch to clear vertical.
Fairing strips 1/16"
under stringer f

W6

W7