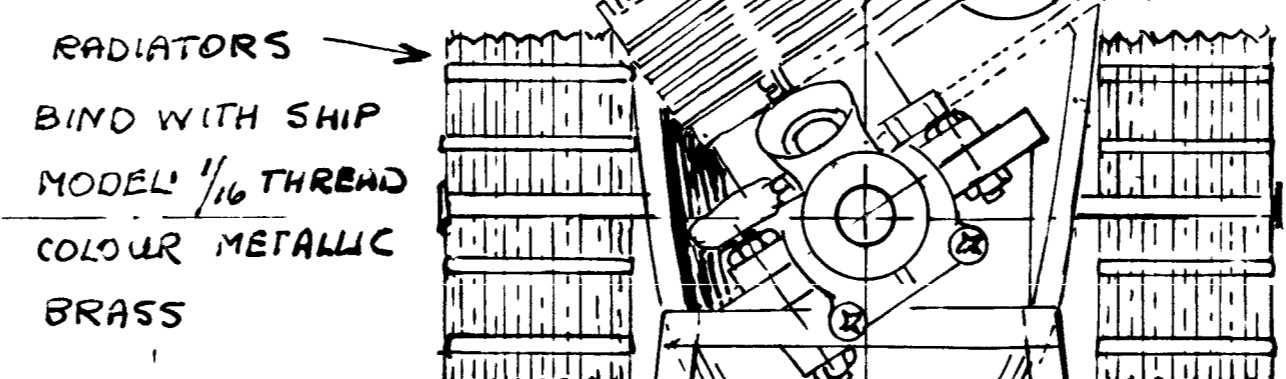
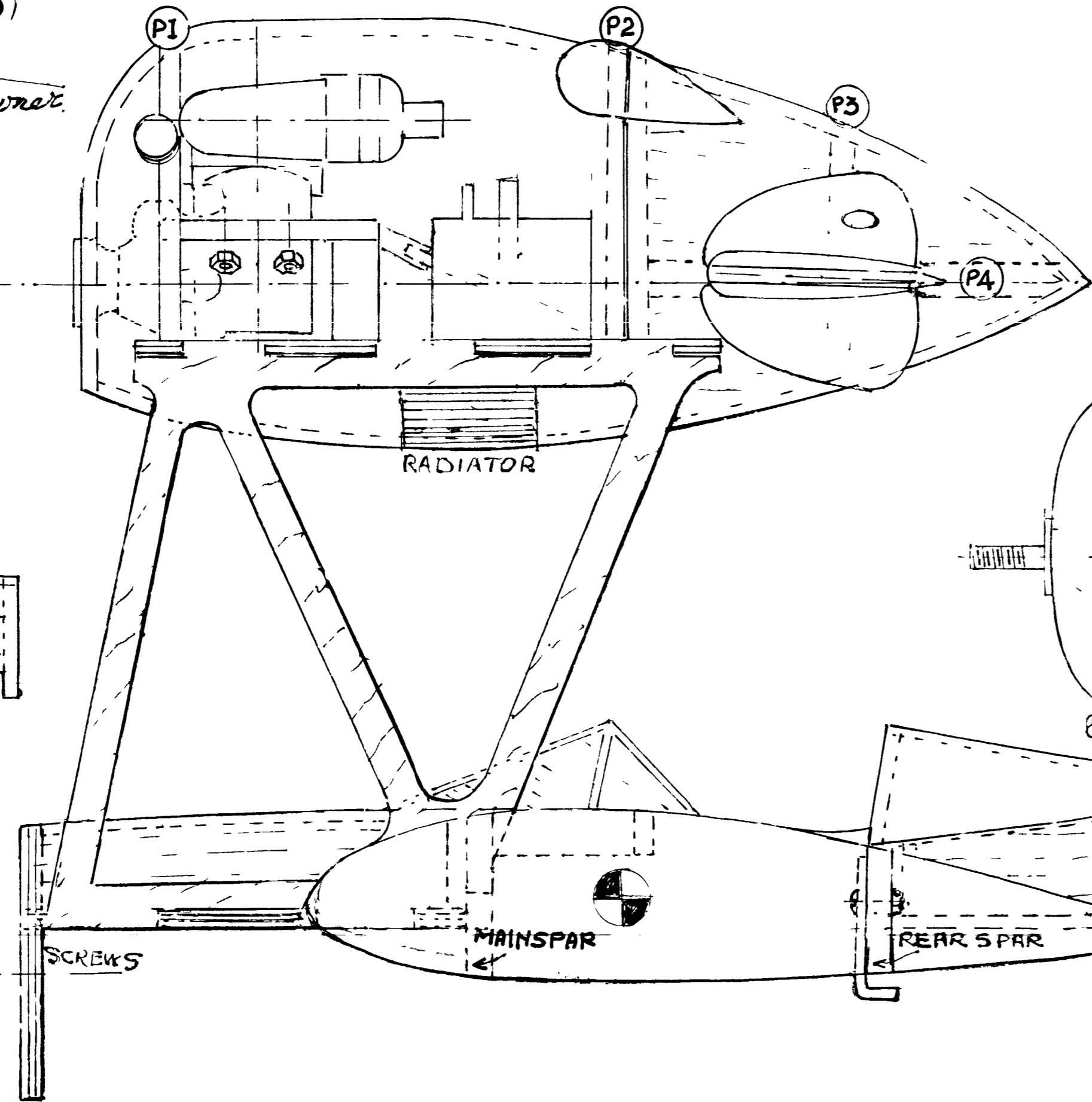
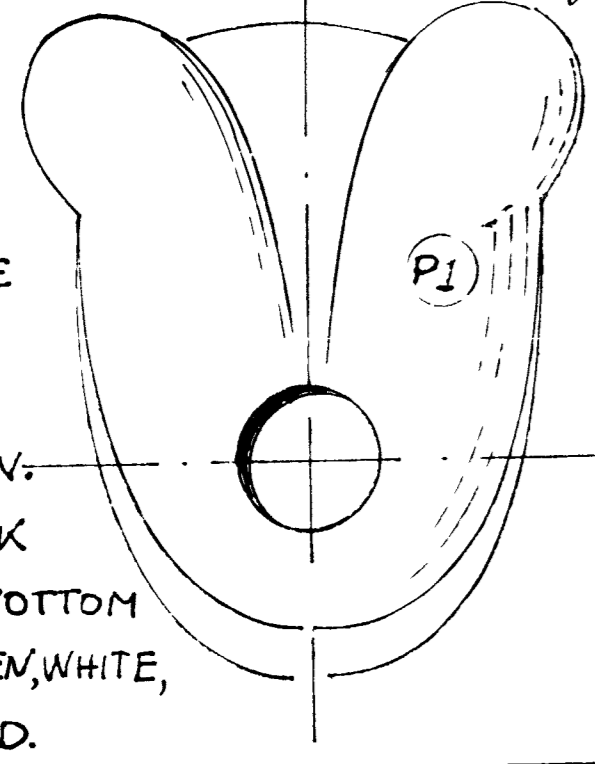


MACCHI M-33 (1925)

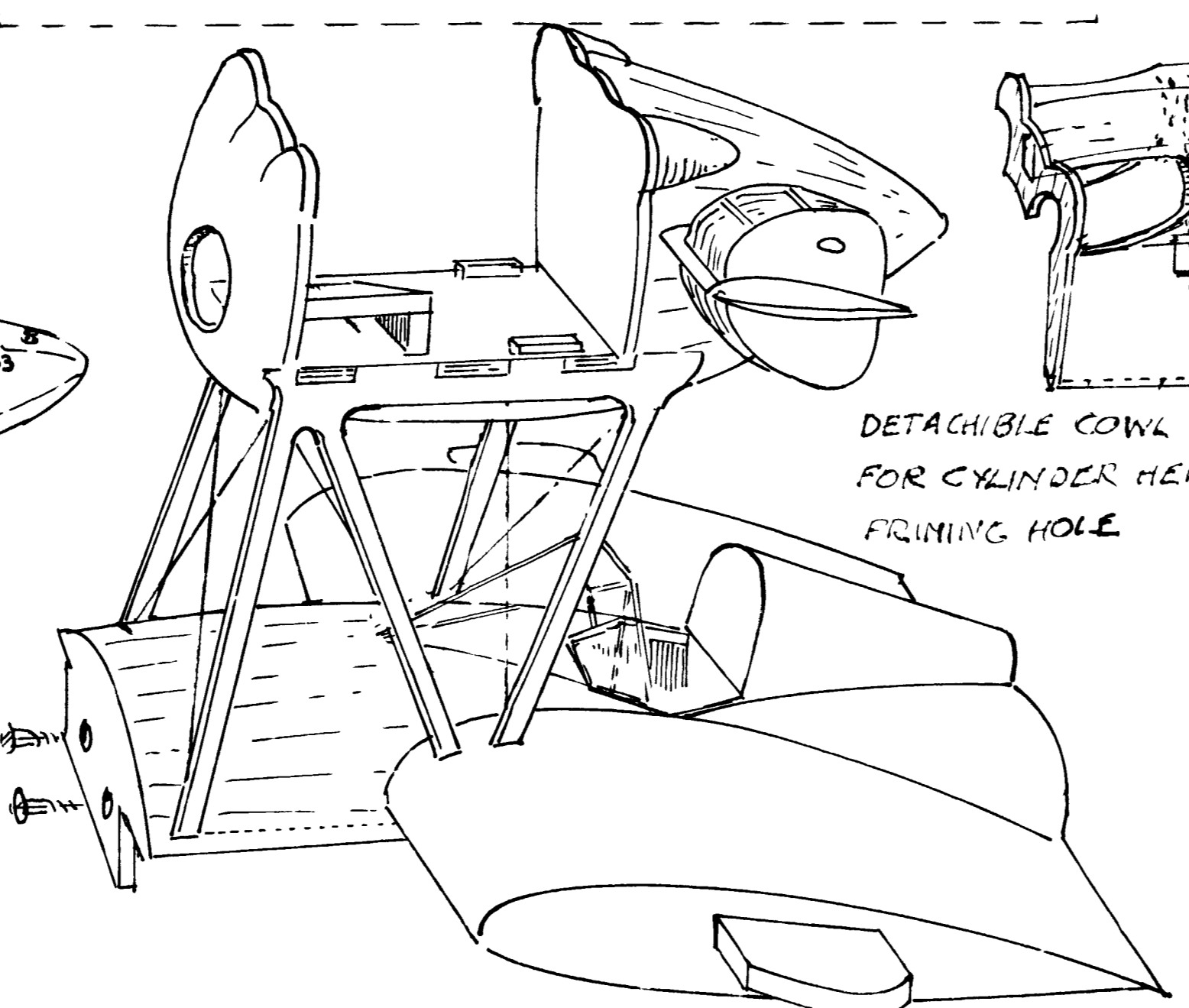
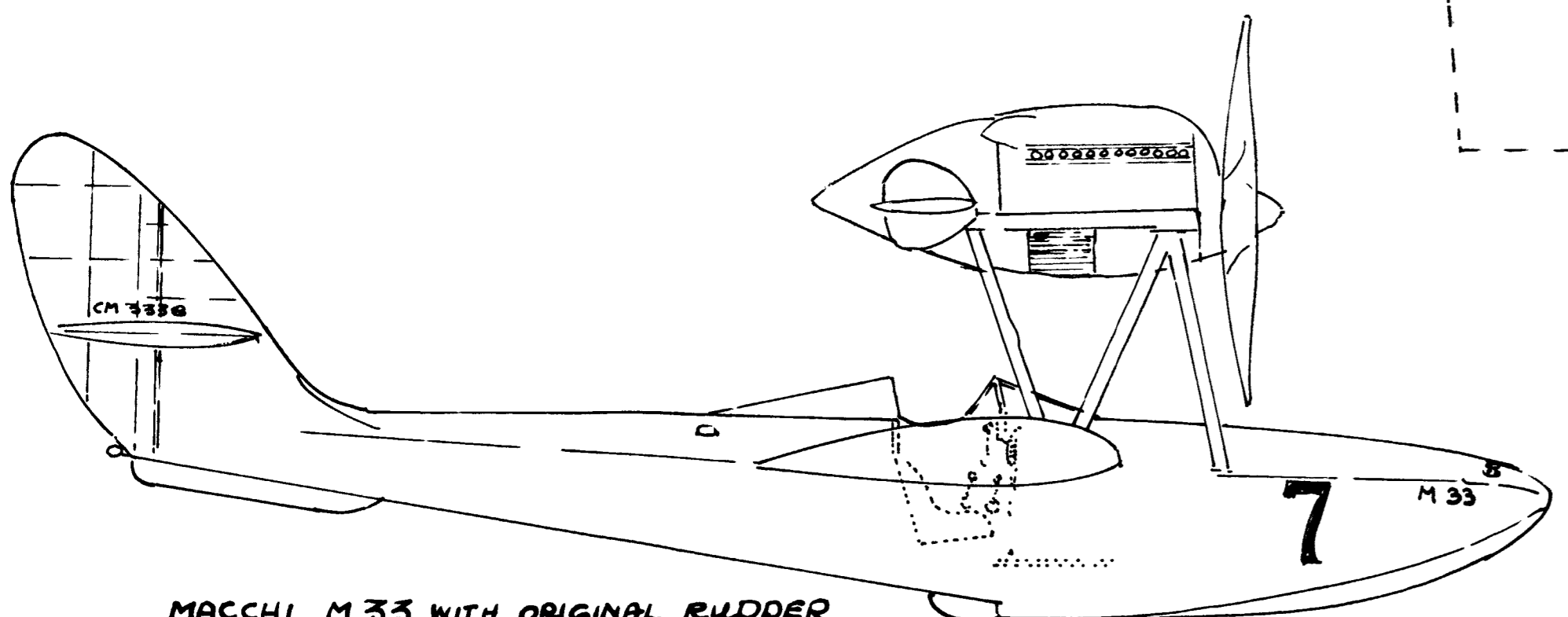
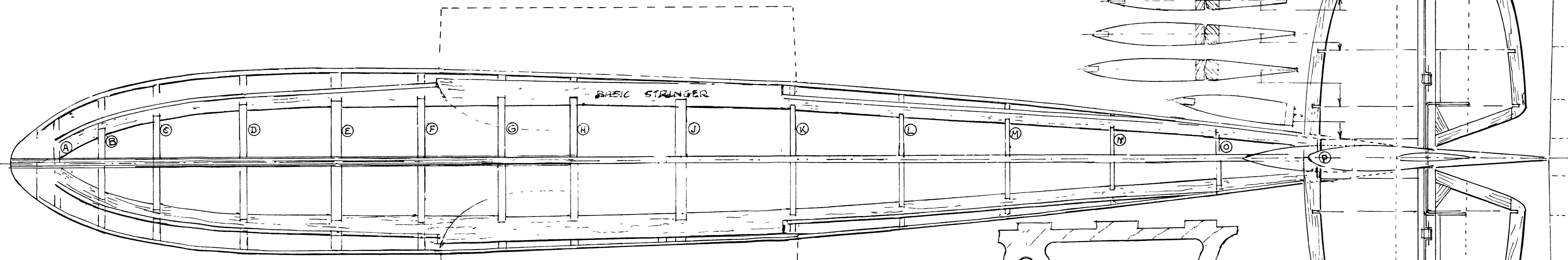
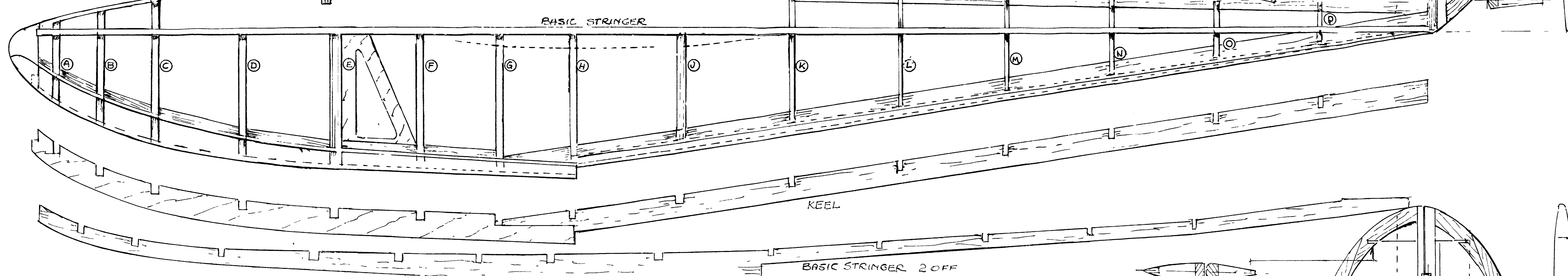
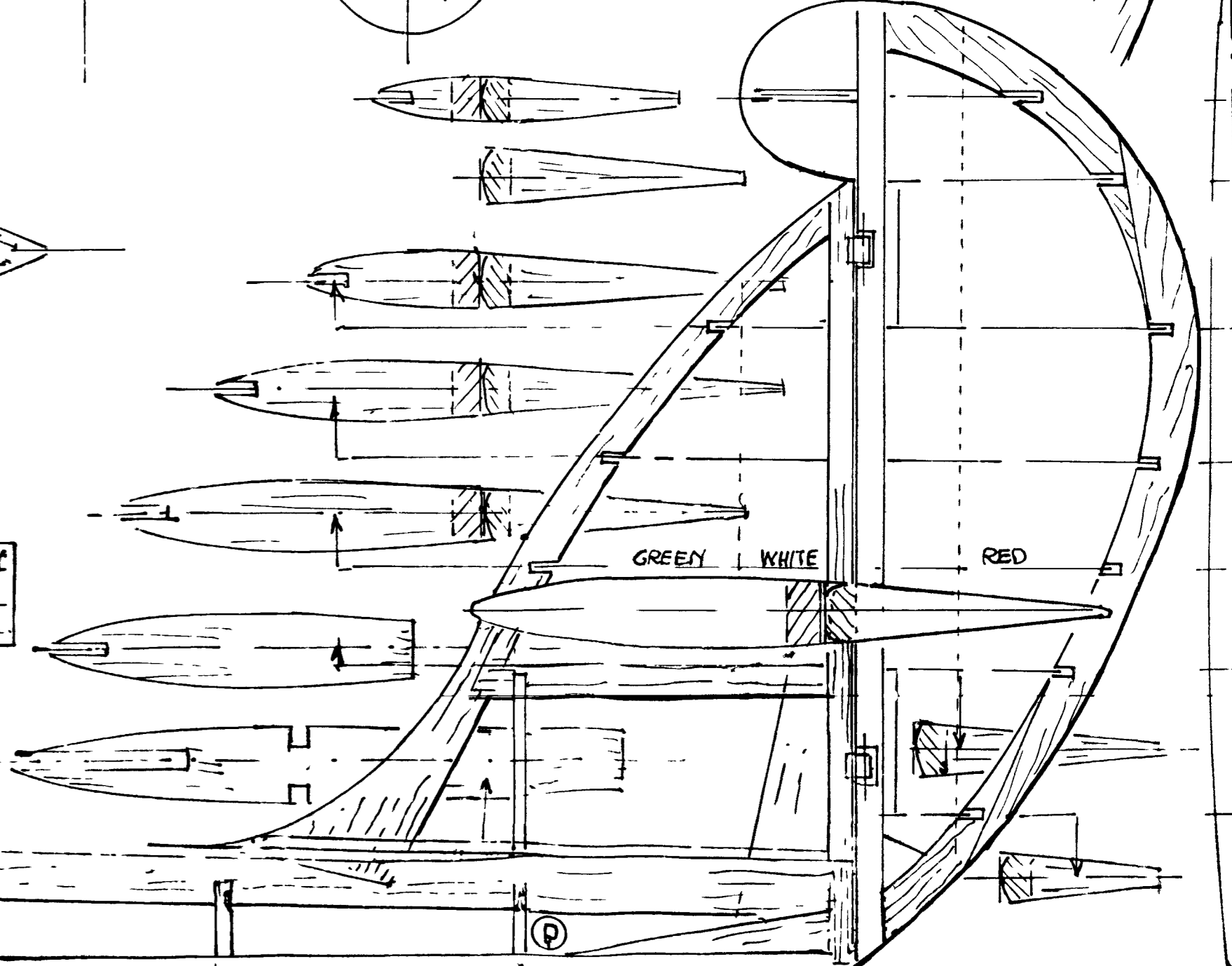
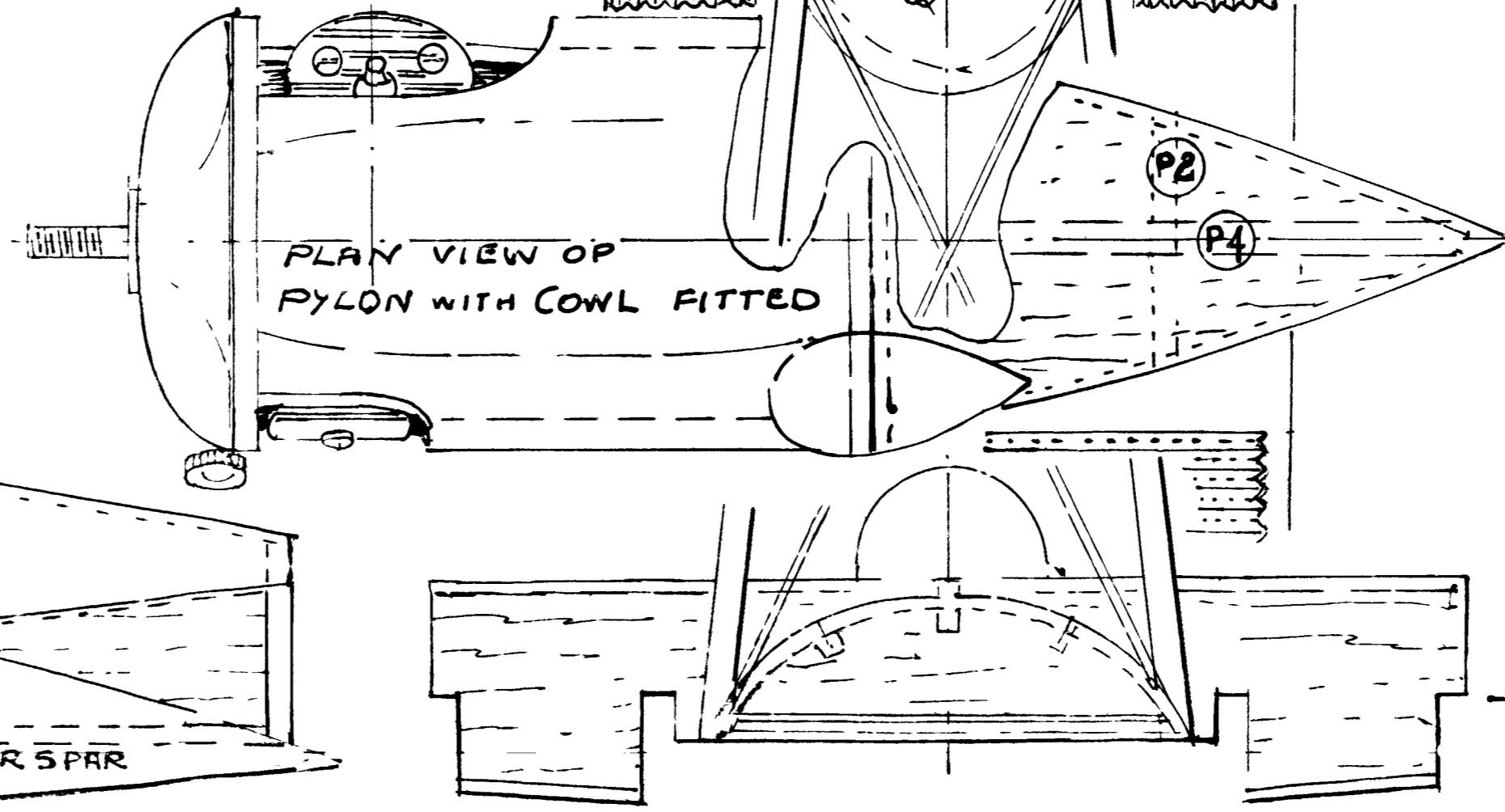
SHEET 1 DWG 36

DESIGNED AND DRAWN BY Harold G. J. Towne

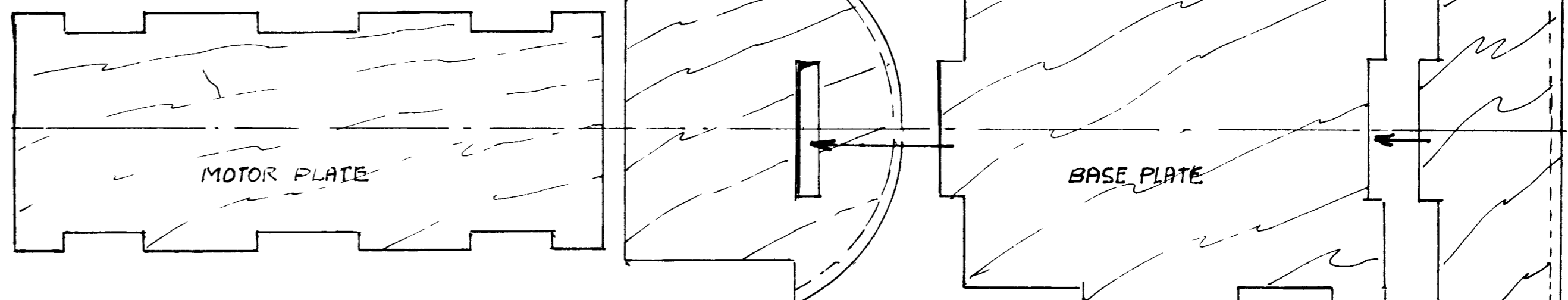
COLOR SCHEME
 FUSELAGE - DUCK EGG BLUE
 CENTRE SECTION 99
 PYLON SILVER
 WING PANELS DARK STRAW
 FUSELAGE BOTTOM - BLACK
 FIN & RUDDER & TOP & BOTTOM
 STABILIZER &AILERONS GREEN, WHITE,
 & RED.



PLAN VIEW OF PYLON WITH COWL FITTED



DETACHIBLE COWL SHOWING CUT-OUTS FOR CYLINDER HEAD & EXHAUST FIRING HOLE



NOTE - MAIN SPAR IS FIXED TO THE REAR OF THIS PLATE WITH SCREWS & CEMENT

MACCHI M 33 WITH ORIGINAL RUDDER
 THE SCHNEIDER TROPHY 1913-1931
 THE 1925 SCHNEIDER TROPHY CONTEST WAS FLOWN AT BALTIMORE, USA.
 GREAT BRITAIN ENTERED THE FIRST TWIN FLOAT MONOPLANE THE
 SUPERMARINE S4 DESIGNED BY R.J. MITCHELL.
 THE OTHER BRITISH ENTRIES WERE TWO GLOSTER-NAPIER 1115.
 THE THREE AMERICANS WERE THE CURTISS R3C2 AND THE
 ITALIAN TEAM WERE THREE MACCHI 33 FLYING BOATS.
 THE RACE WAS WON BY LT J. DOOLITTLE (BECAME WORLD FAMOUS
 IN THE 2ND WORLD WAR) WITH THE R3C2 AT AN AVERAGE SPEED OF
 374.27 KM/H. THE M 33 WAS THE LAST FLYING BOAT TO ENTER.
 AS THESE WERE SUPERCEDED BY FLOAT PLANES.
 PLANS OF THE CURTISS R3C2 ARE AVAILABLE FROM AUTHENTIC SCALE DRAWING NO 34

AS THIS MODEL WAS DESIGNED FOR RADIO, THE PYLON, WINGS & COCKPIT ARE REMOVABLE IN ONE UNIT, THE FRONT HATCH GIVING ACCESS TO FIXING SCREWS.

THE PYLON LEGS & TOP & BOTTOM PLATES ARE 4mm SHEET BIRCH 3PLY TONGUED & SLOTTED TOGETHER THE HULL IS 3/32 Balsa WITH A 6% SPLY KEEL AS FAR AS THE STEP & HARD 3/16 Balsa AFT. THE FORMERS HAVE CROSSPIECES WHICH CAN BE REMOVED WHEN HULL IS COMPLETE.

TO BUILD, LAY BASIC STRINGERS FLAT ON PLY ADDING FORMERS & KEEL-INVERTED IN BOAT STYLE. THE WINGS HAVE NEAR FULL DEPTH 3% SPRUCE SPARS, WHILST THE RIBS ARE SPLIT LONGITUDINALLY WHICH WHEN COVERED GIVE A TRUE RESEMBLANCE OF RIB OUTLINE & TRUE TO SCALE.

ONLY NINE RIBS ARE SHOWN, THE INTERVENING ONES ARE ADAPTED FROM THESE BY LEAVING OVERSIZE & SANDING TO CONTOUR WHEN FITTED.

