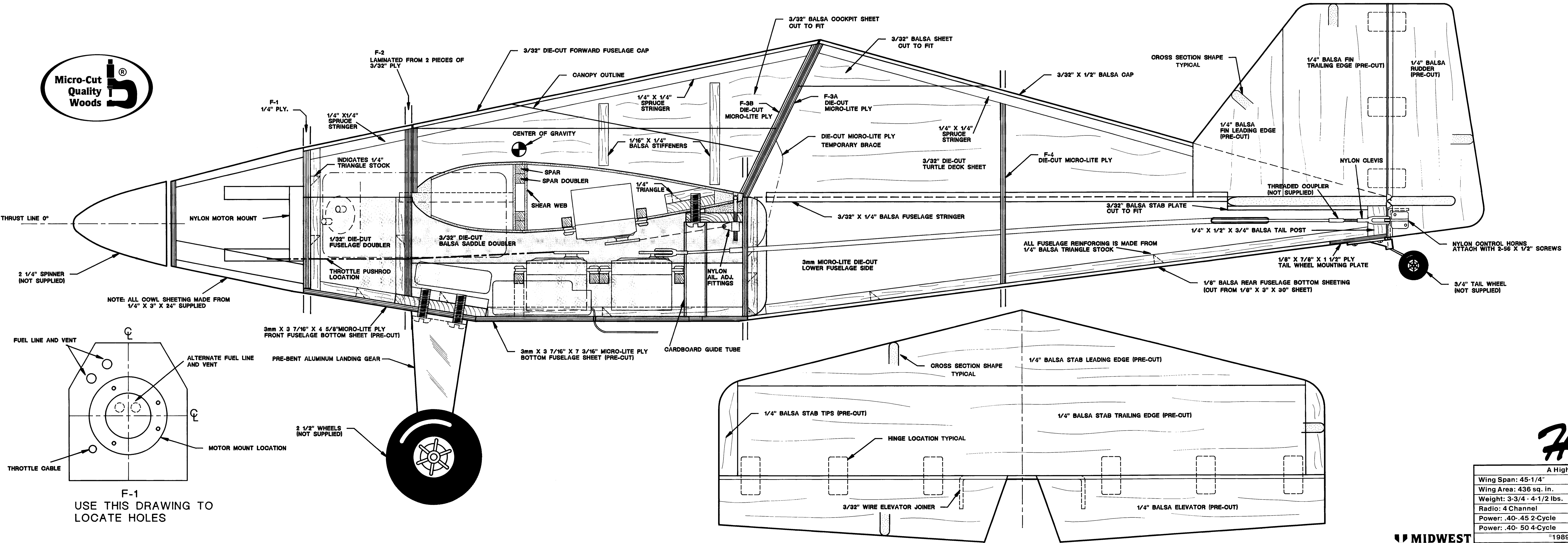
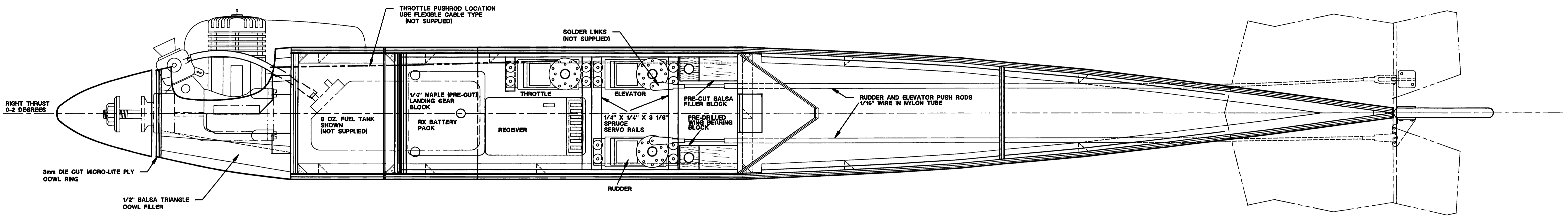


BOTTOM VIEW OF WING SHOWN



Success Series
 This kit features a complete and fully illustrated step-by-step construction manual AND full-size plans that ASSURE SUCCESS!

THE ILLUSTRATIONS IN THE MANUAL CLARIFY AND DETAIL MANY OF THE ASSEMBLIES SHOWN ON THE PLAN, AND THE TWO SHOULD BE USED TOGETHER DURING CONSTRUCTION.

MIDWEST
Hot's II

Kit No. 164
 3/89

A High Performance Fun-Fly Model	
Wing Span: 45-1/4"	Kit Production: Ed Rogala
Wing Area: 436 sq. in.	Engineered By: Don Sobbe & Tom Herr
Weight: 3-3/4 - 4-1/2 lbs.	Plans By: Tom Herr
Radio: 4 Channel	Manufacturing By: Sue Burney
Power: .40-.45 2-Cycle	Approved By: Frank Garchner
Power: .40-50 4-Cycle	Designed By: Dan Santich
© 1989, Midwest Products Co., Inc.	
Midwest Products Co., Inc. • 400 S. Indiana Street • Hobart, IN 46342	