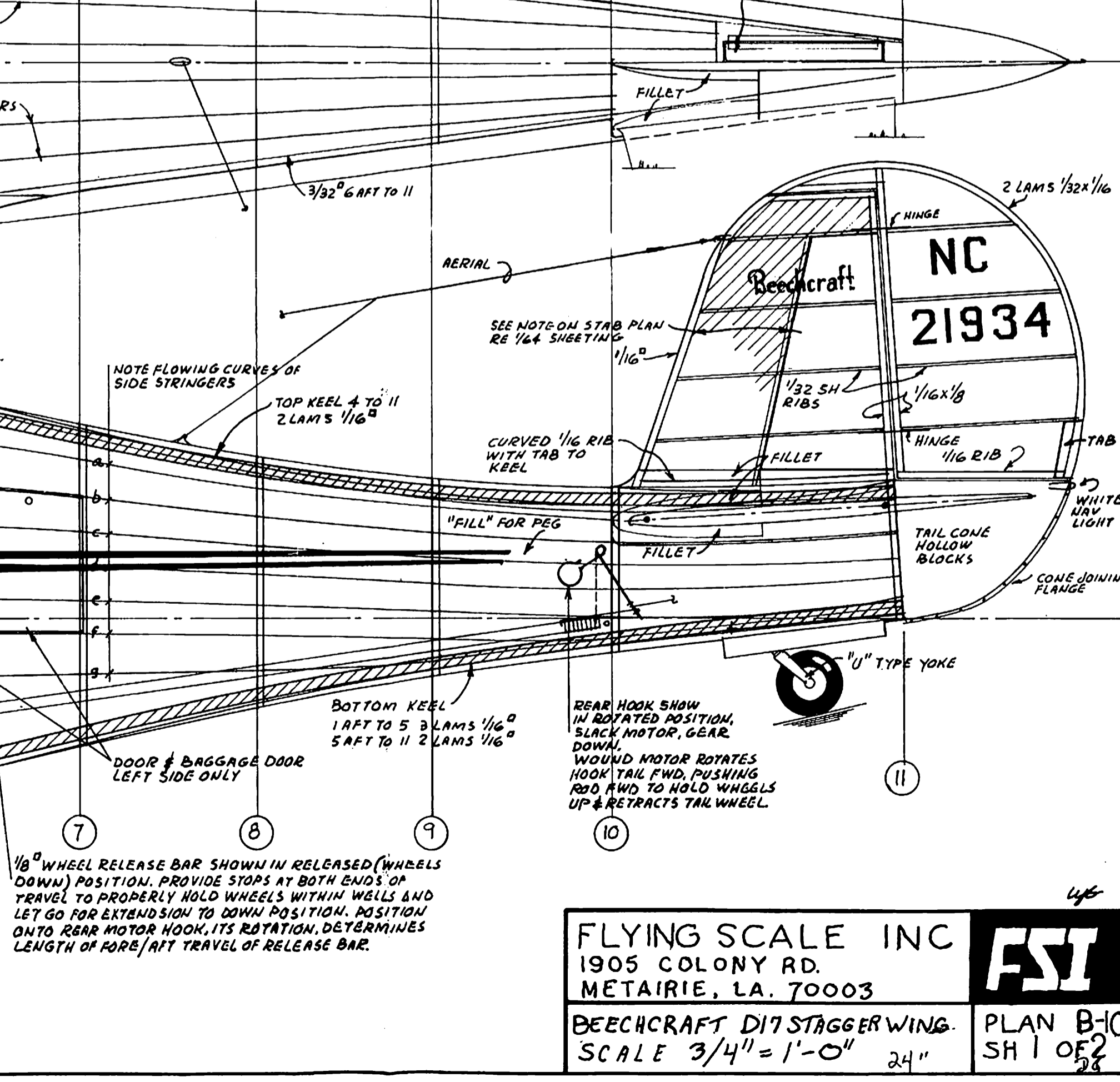
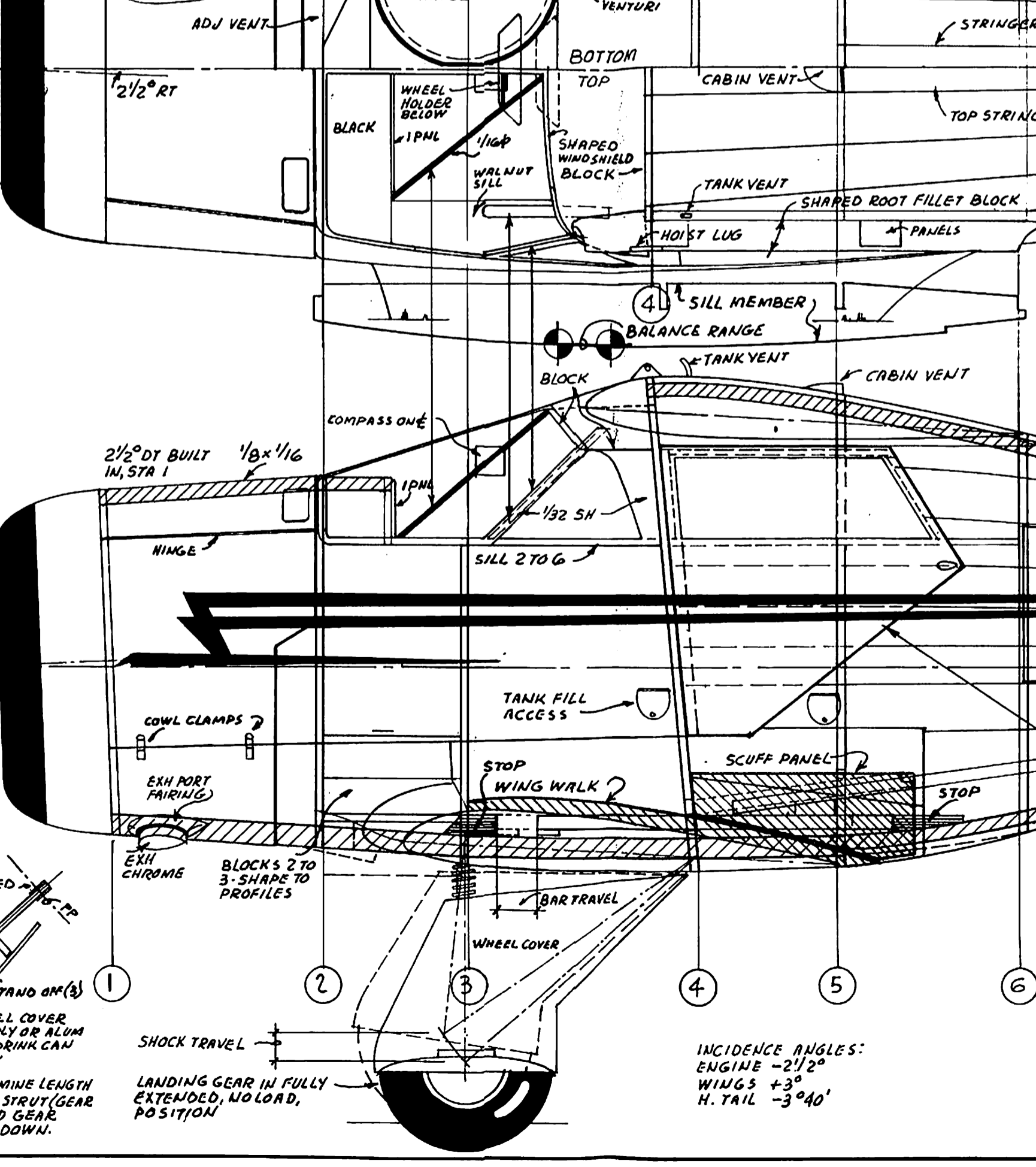
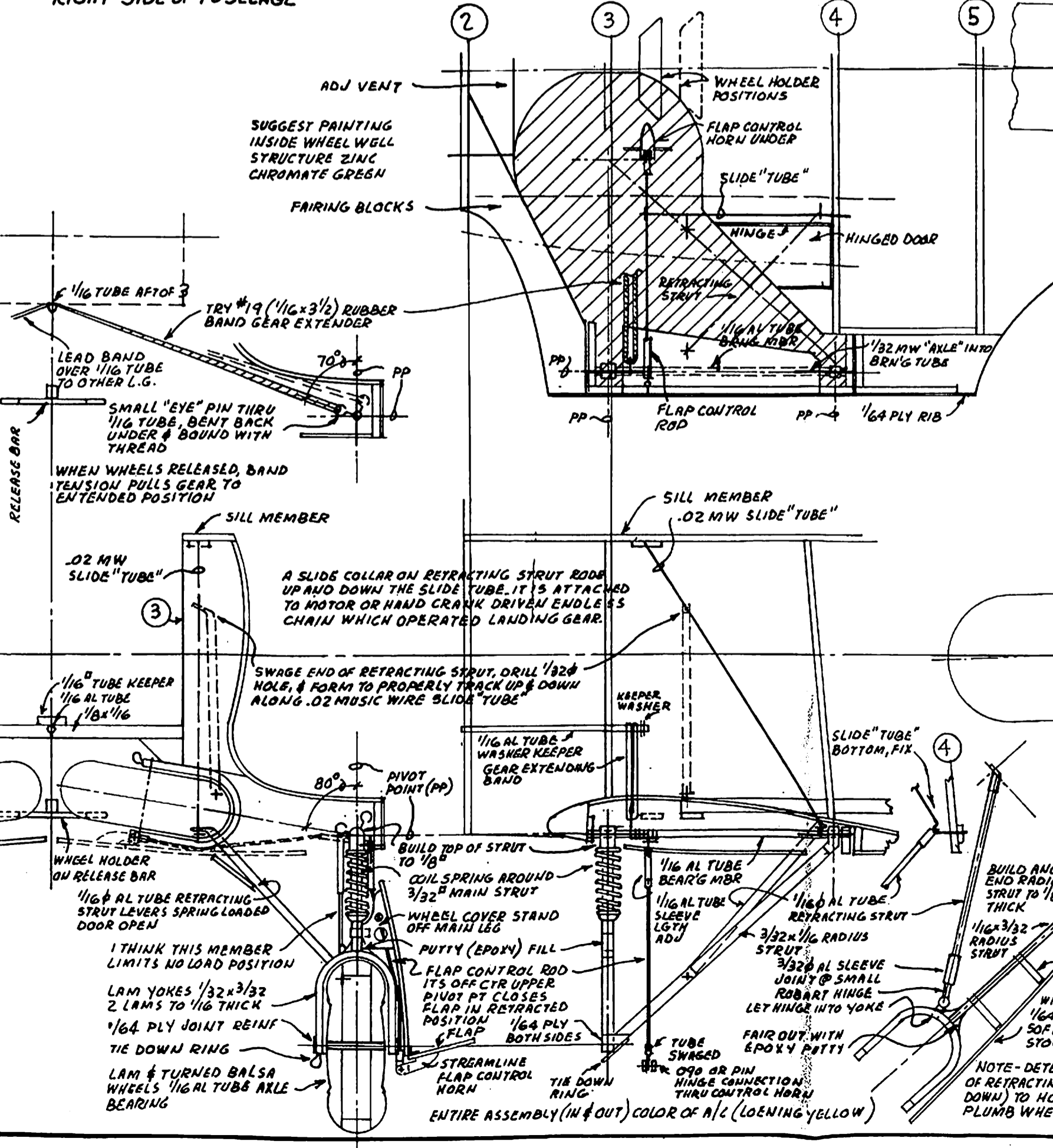
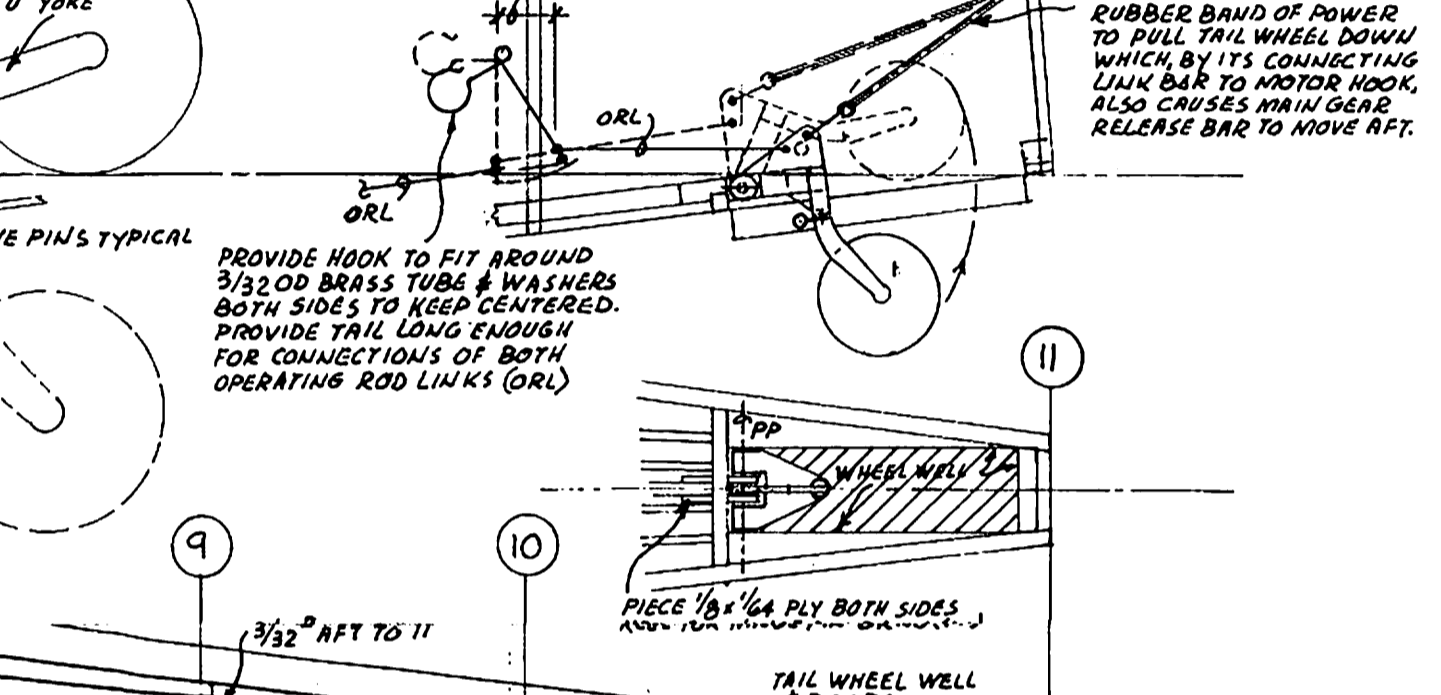
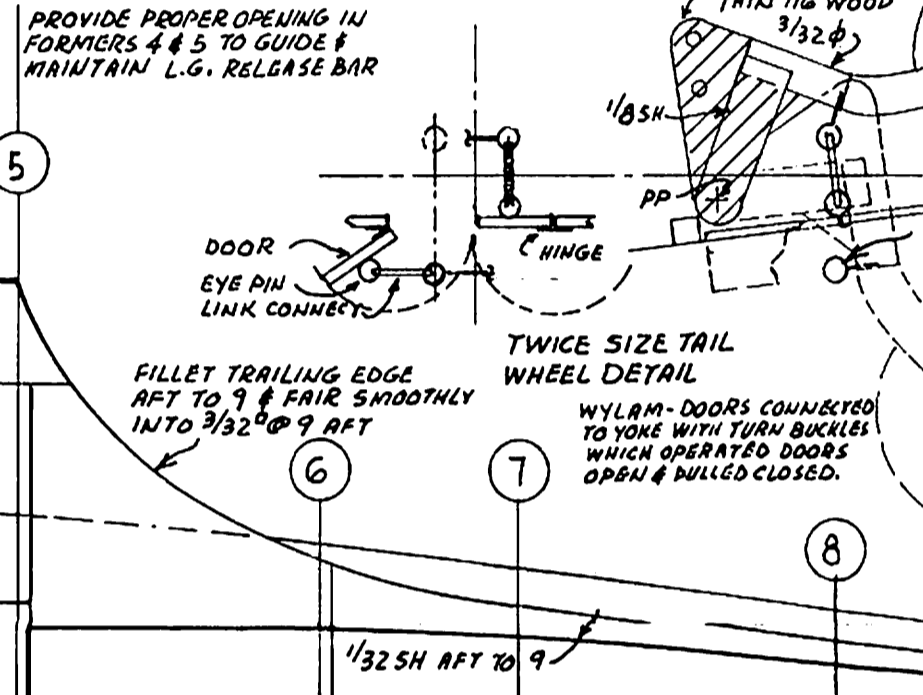
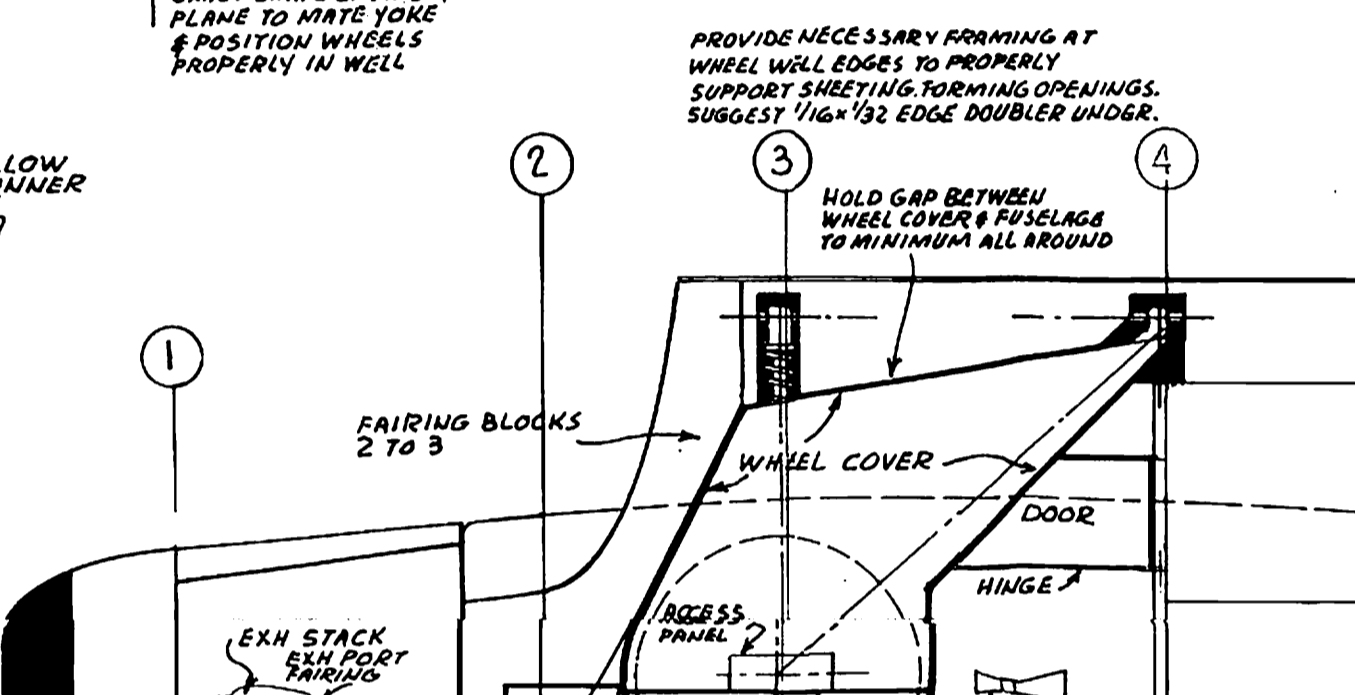
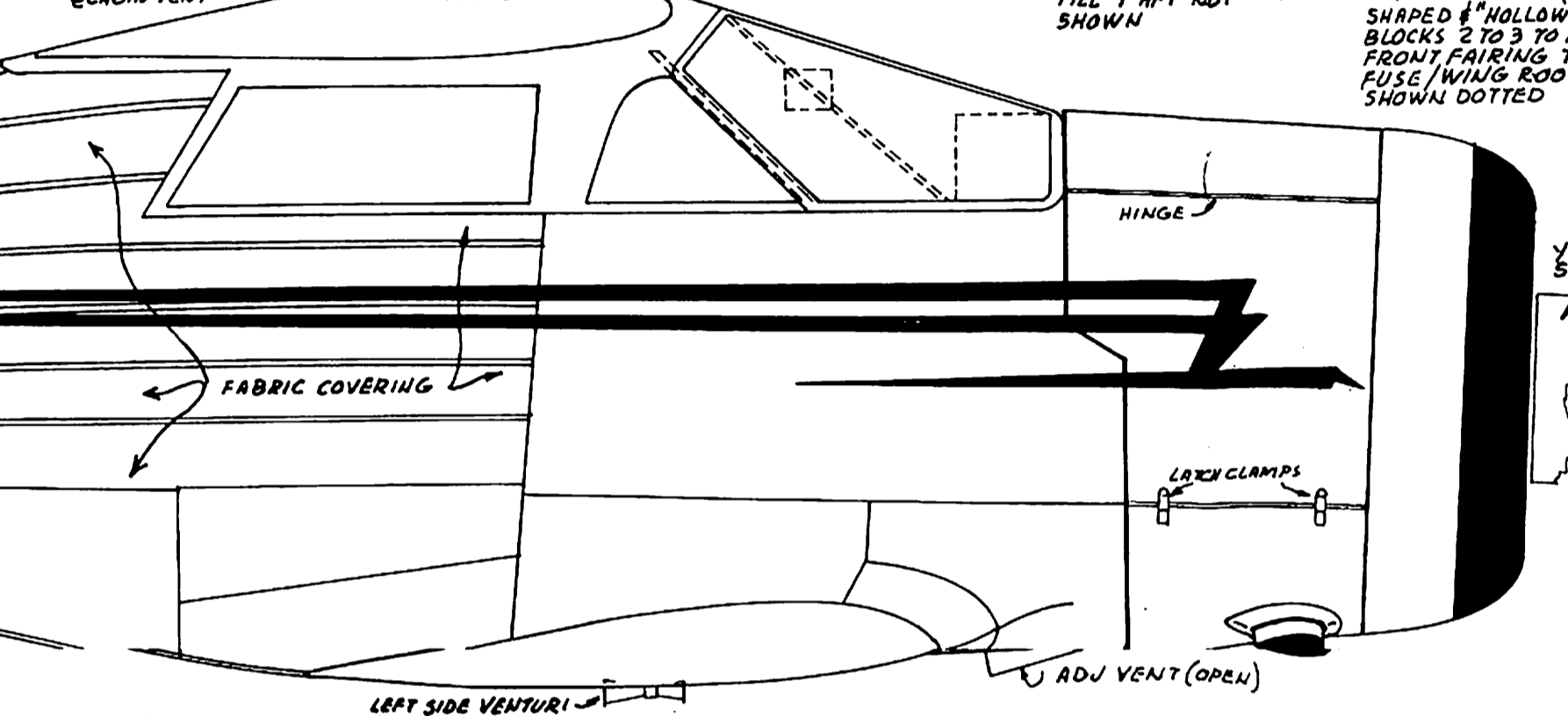
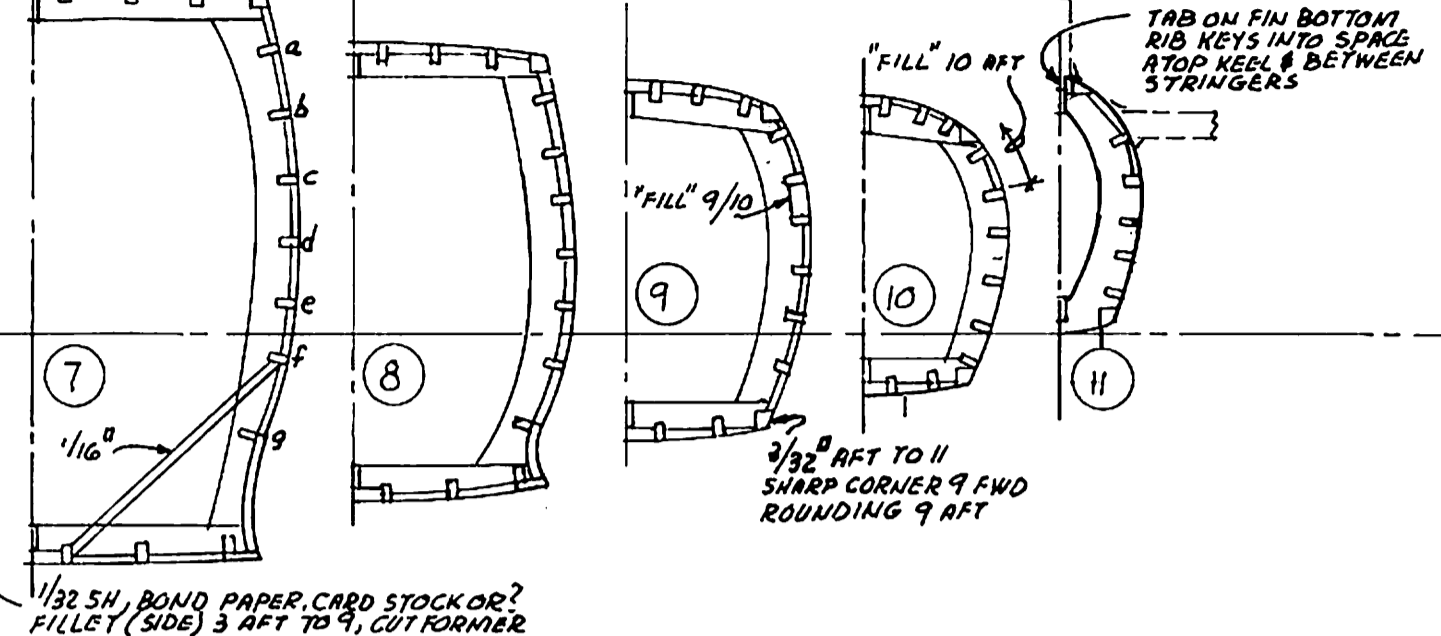
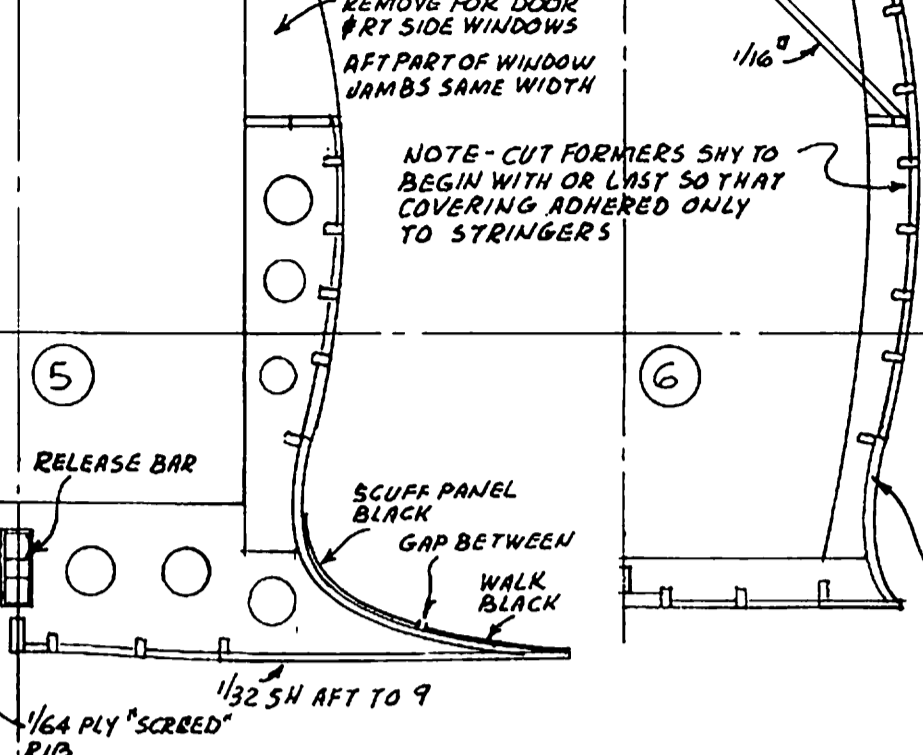
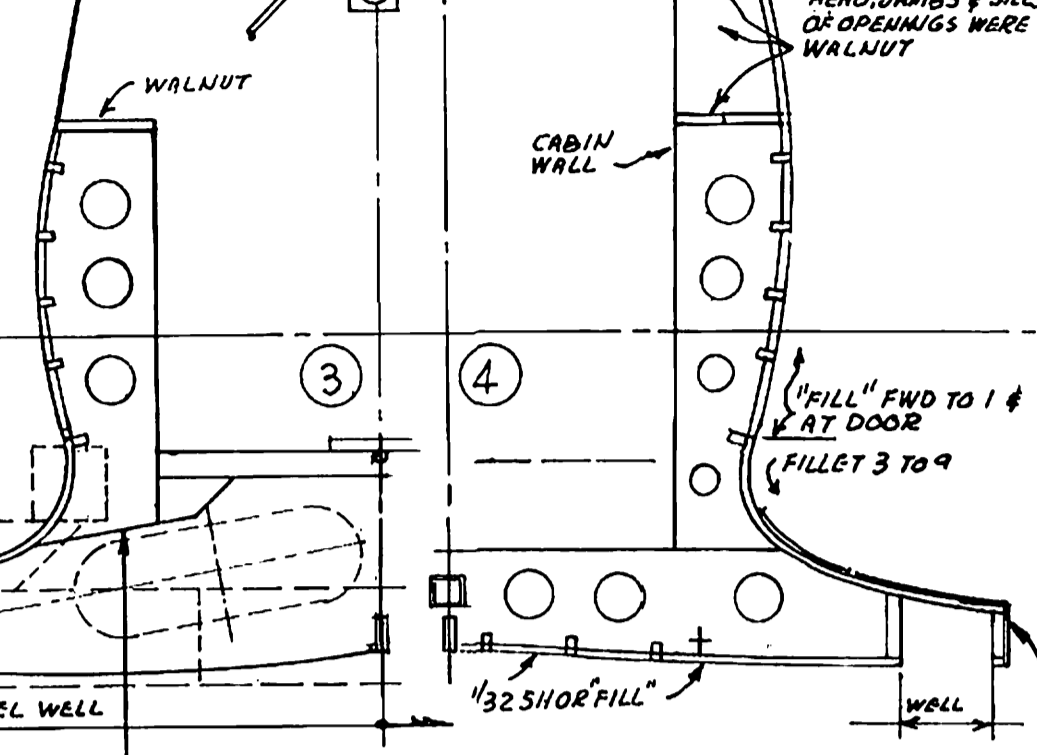
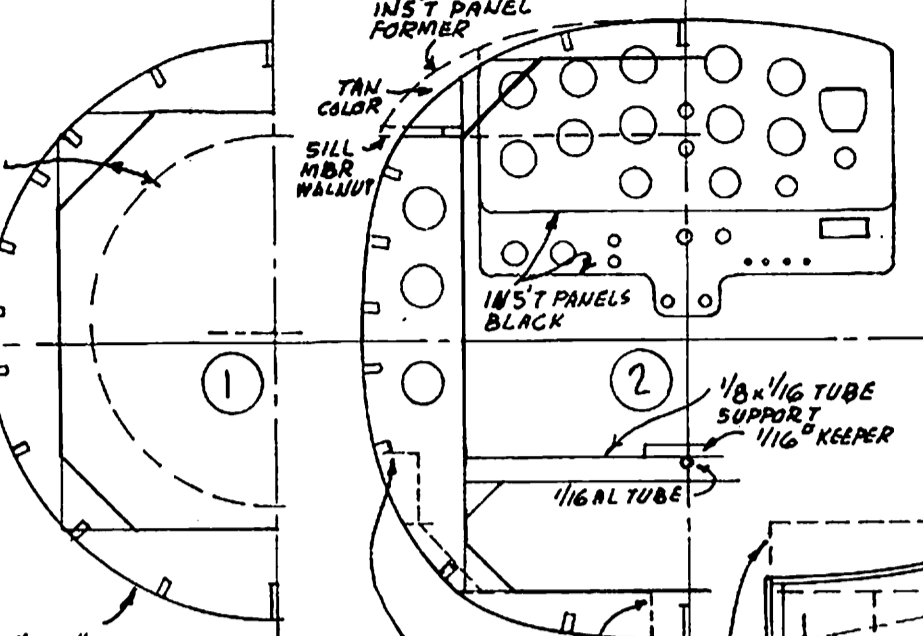
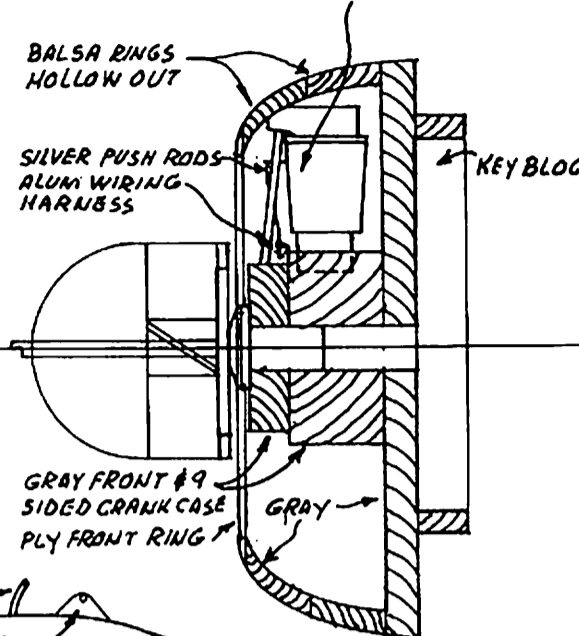
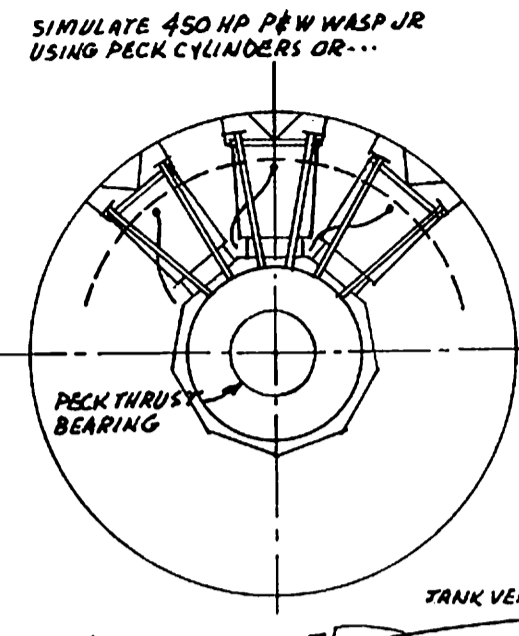


SIMULATE 450 HP P&W WASP JR USING PECK CYLINDERS OR...

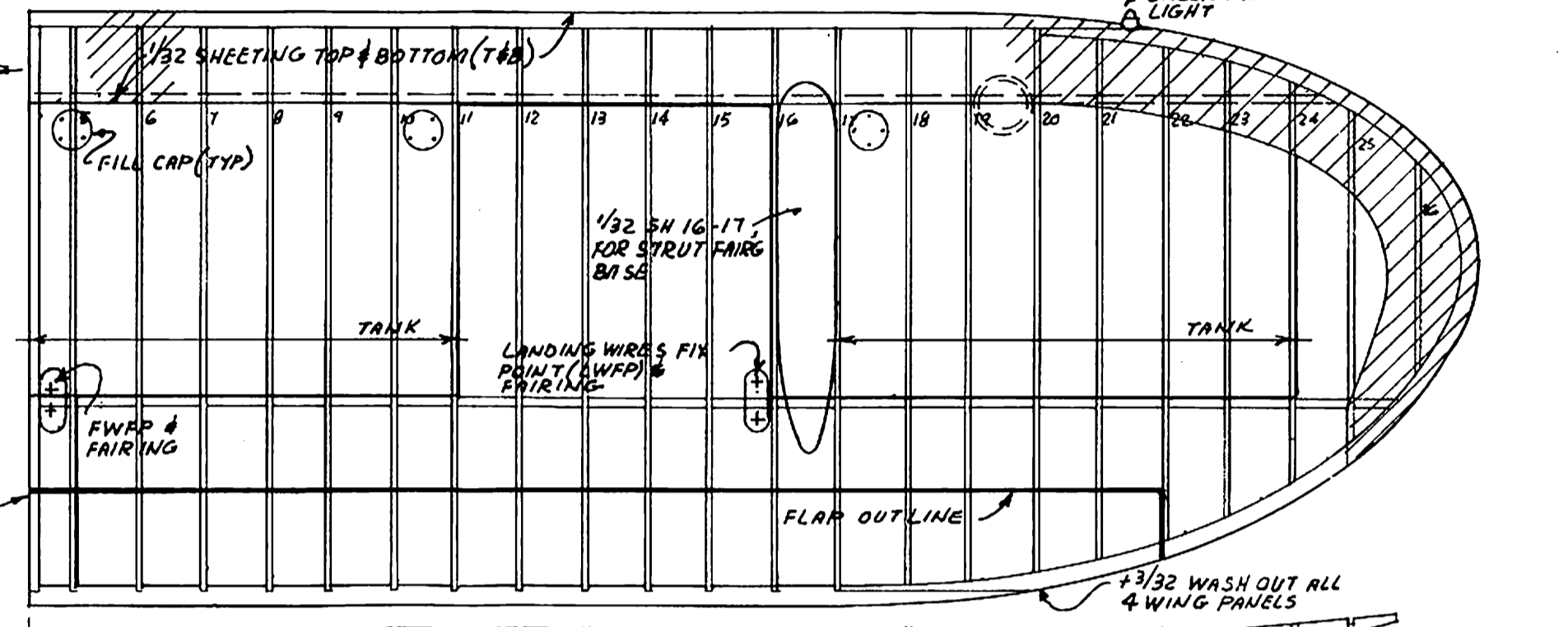
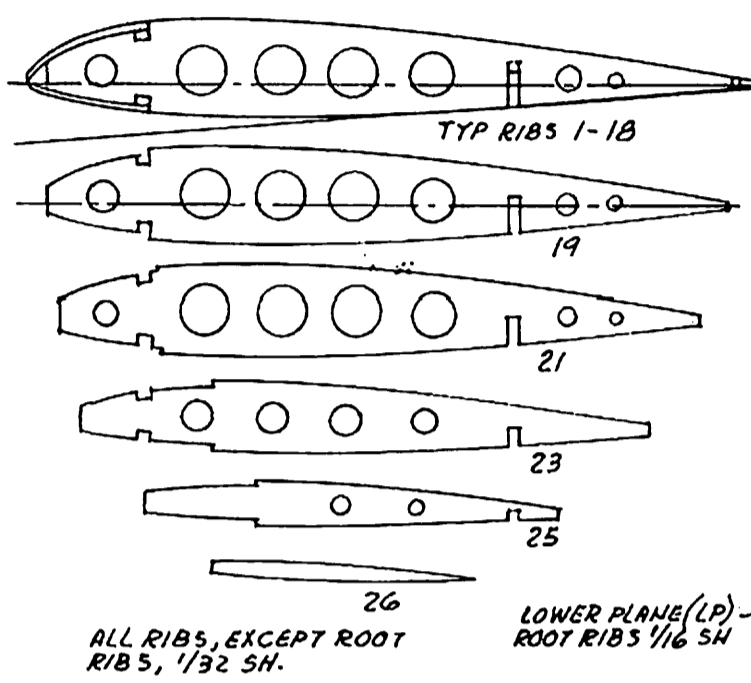
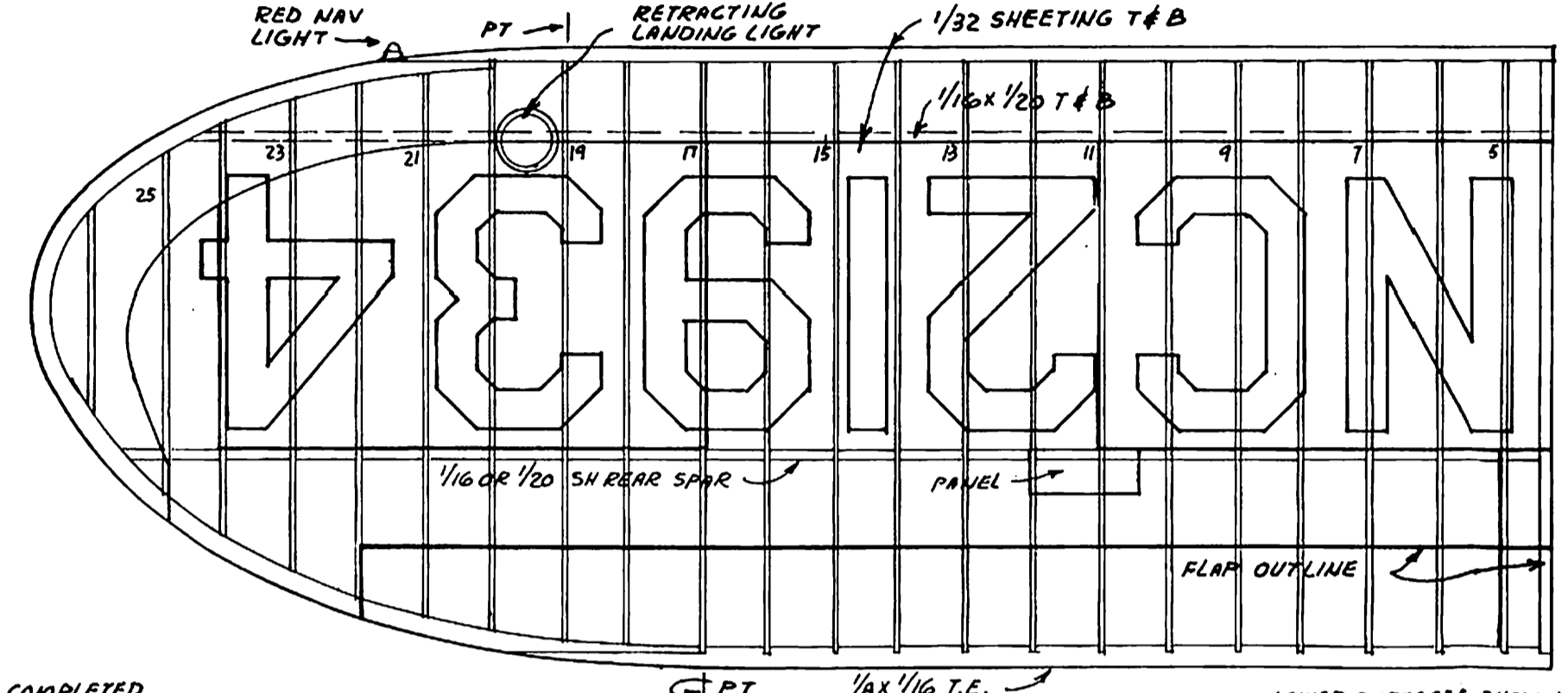
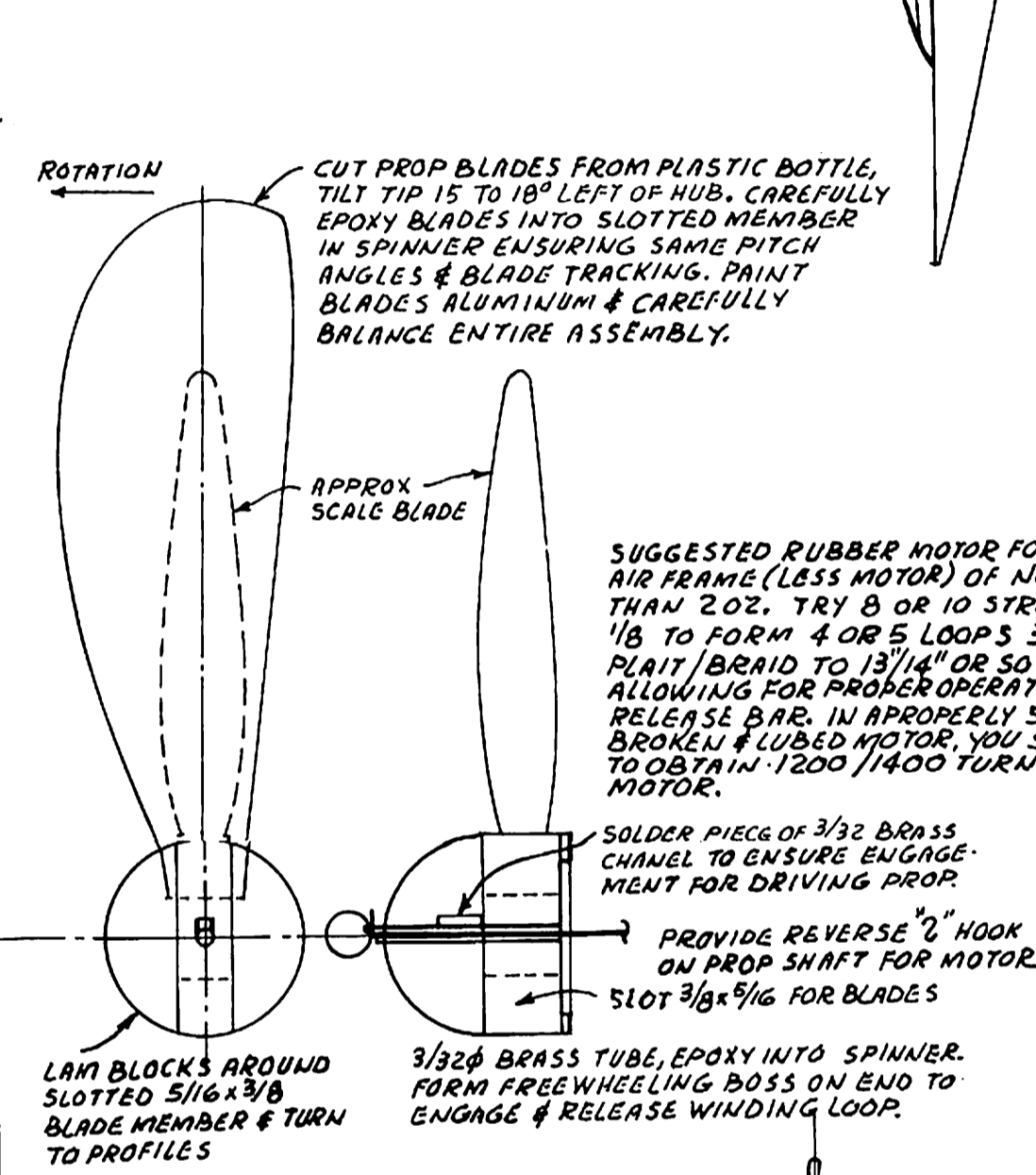
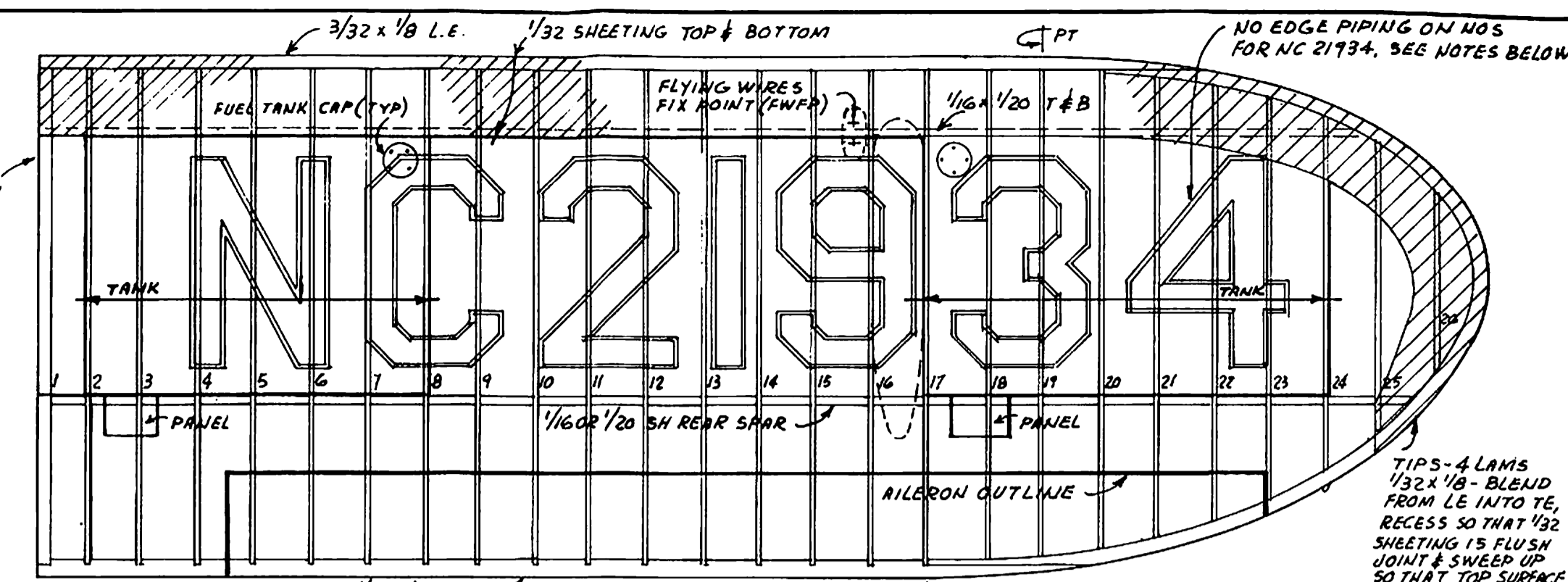
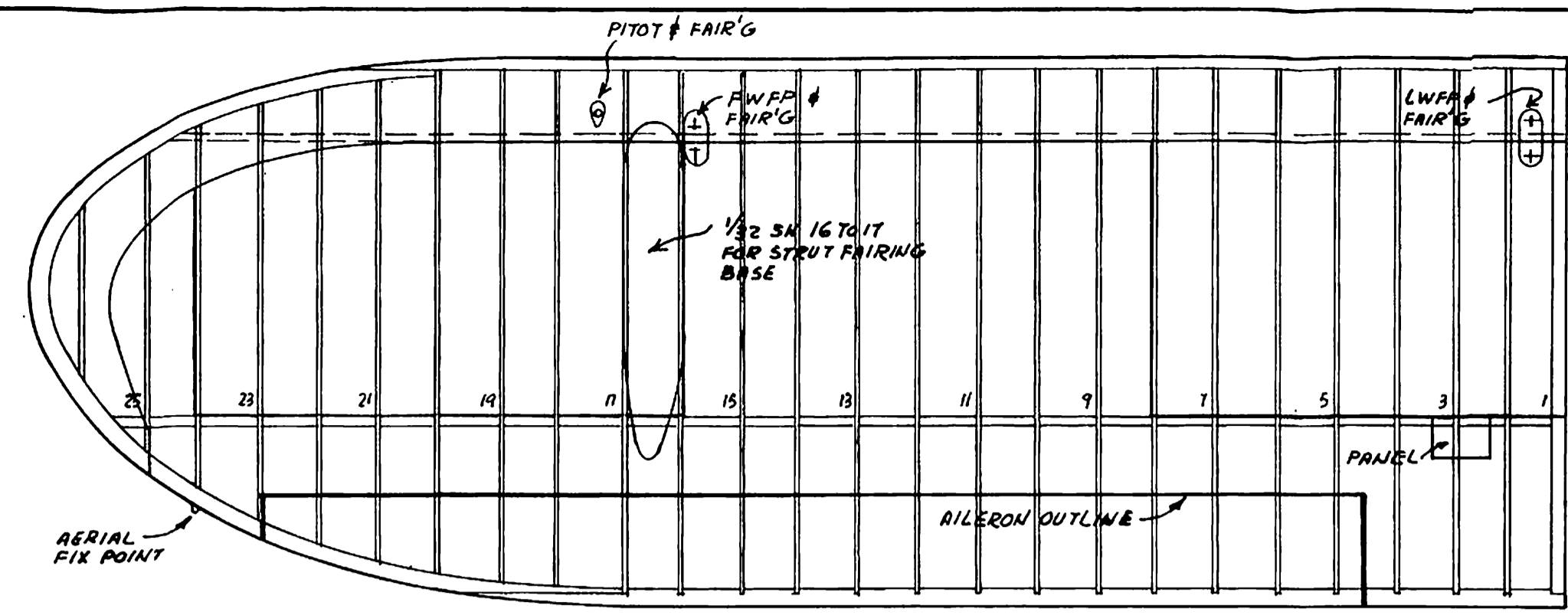
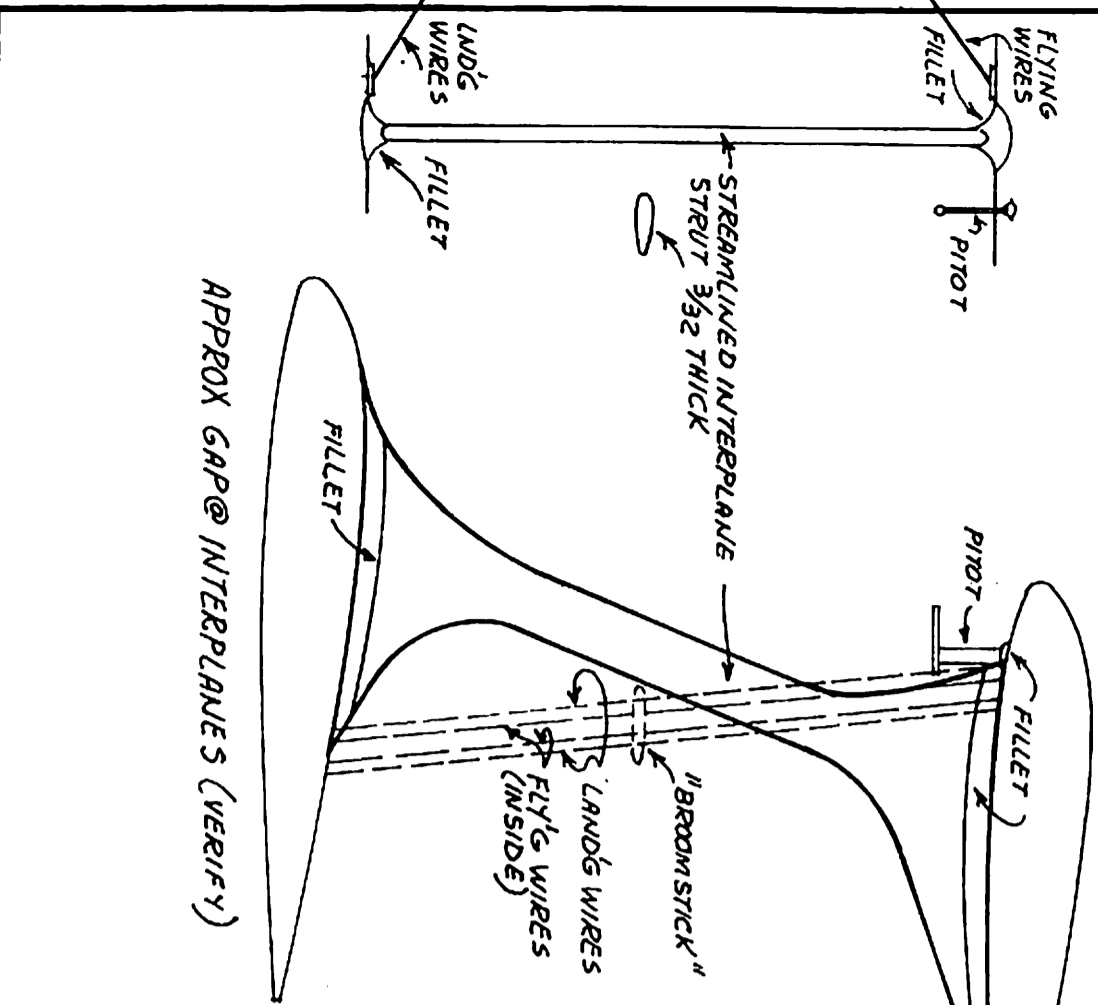
SMALL PECK CYLINDERS BUILT UP Balsa ROCKER ARM HOUSINGS. PAINT CYLS SILVER & WIRE OFF FILLS (BLACK)

INTERIOR UPHOLSTERY CUSTOMER CHOICE HARMONIZING WITH EXT COLOR. POPULAR WERE GRAY CORDED FABRIC, TAN LEATHER...

BUILD UP FORMERS USING 1/16 SHEET & ENSURE THAT BOTH HALVES ARE IDENTICAL. USE 1/20 OR 1/32x1/32 FOR STRINGERS. PHOTOS INDICATE SHARP CORNER FLOWING TO EASED ROUND 9 & AFT



FLYING SCALE INC
 1905 COLONY RD.
 METAIRIE, LA. 70003
BEECHCRAFT D17 STAGGER WING.
 SCALE 3/4" = 1'-0" 24"
PLAN B-10
 SH 1 OF 2



SUGGESTED RUBBER MOTOR FOR COMPLETED AIR FRAME (LESS MOTOR) OF NOT MORE THAN 2 OZ. TRY 8 OR 10 STRANDS OF 1/8" TO FORM 4 OR 5 LOOPS 30" LONG. PLAIT/BRAID TO 13/16" OR SO FINAL LENGTH, ALLOWING FOR PROPER OPERATION OF L.G. RELEASE BAR. IN PROPERLY STRETCH WOUND, BROKEN & LUBED MOTOR, YOU SHOULD BE ABLE TO OBTAIN 1200/1400 TURNS IN 10/8 MOTOR.

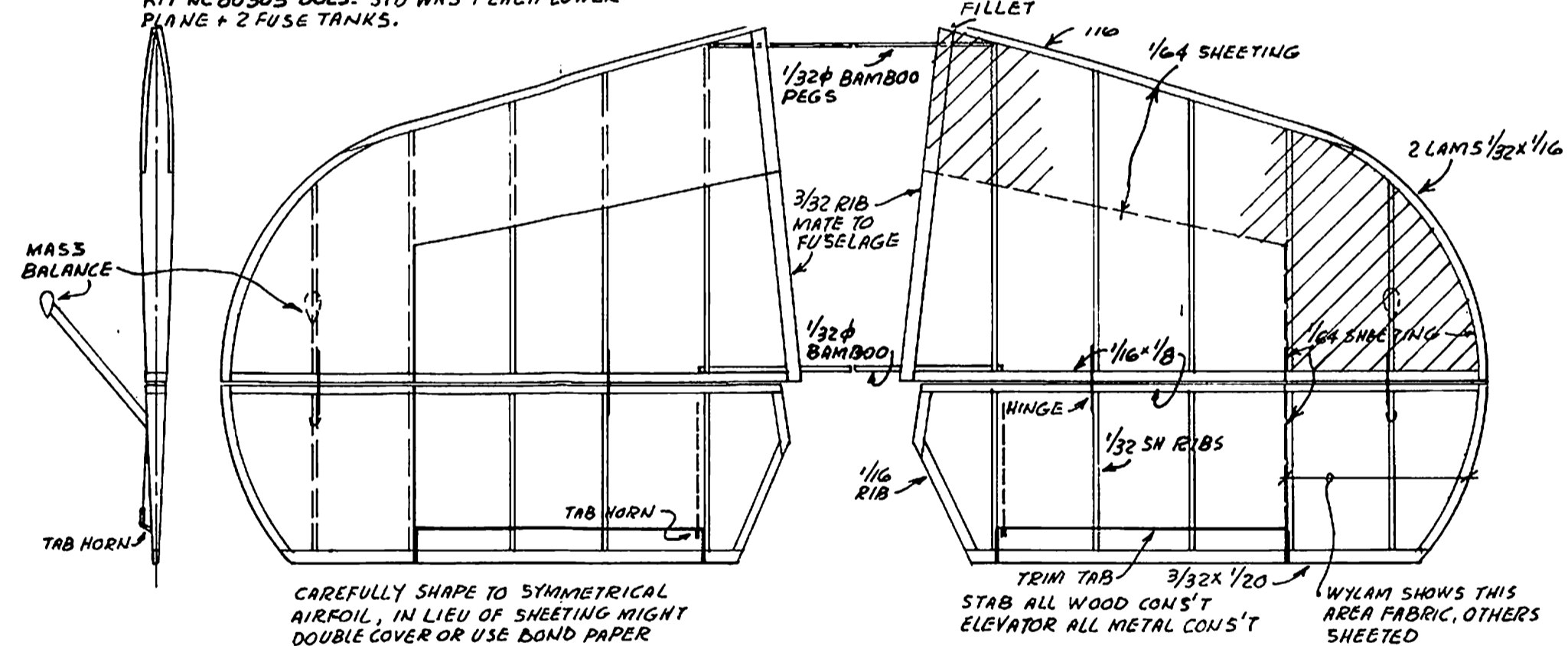
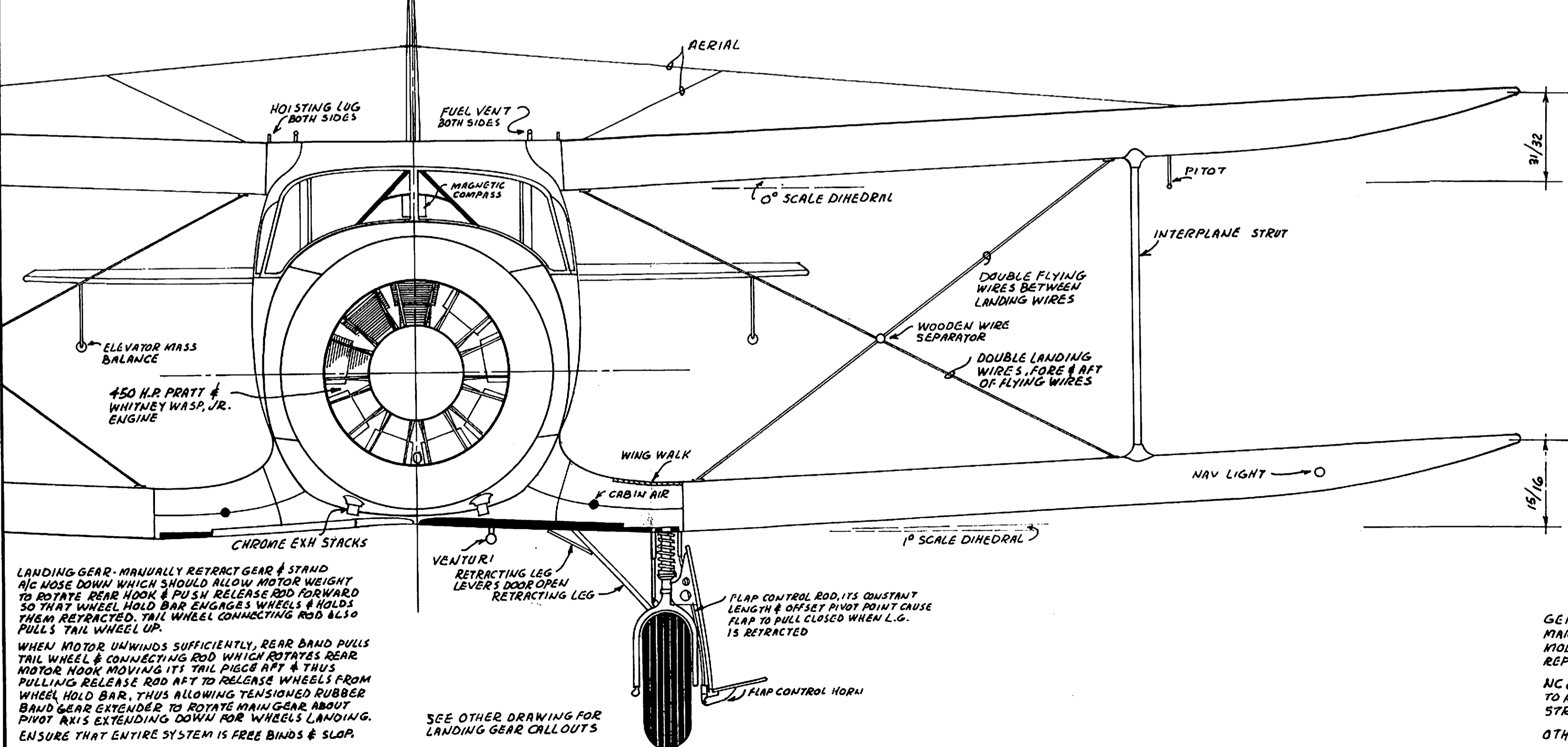
SOLDER PIECE OF 3/32 BRASS CHANNEL TO ENSURE ENGAGEMENT FOR DRIVING PROP. PROVIDE REVERSE 2" HOOK ON PROP SHAFT FOR MOTOR. SLOT 3/16 x 1/16 FOR BLADES.

LAM BLOCKS AROUND SLOTTED 5/16 x 3/8 BRASS TUBE, EPOXY INTO SPINNER. FORM FREEWHEELING BOSS ON END TO ENGAGE & RELEASE WINDING LOOP.

LOWER SURFACES SHOWN ON LEFT PANELS, VIRTUALLY IDENTICAL TO TOPS EXCEPT FOR FUEL TANK CAPS, LANDING LIGHTS, PANELS & REG. NO. FACING.

WINGS ALL WOOD CONS'T, METAL TANK SURFACES APPEAR AS FABRIC COVERED SHEETED AREAS. I DON'T KNOW THAT NC 21934 HAS ALL B WING TANKS. PLASTIC KIT NC 80305 DOES. STD WAS 1 EACH LOWER PLANE + 2 FUSE TANKS.

EXCEPT FOR LENGTHS, MAIN PLANE & LOWER PLANE PANELS ARE SIMILAR. SUGGEST TO SIMULATE FUEL TANKS & OTHER METAL SURFACES: DOUBLE COVER, OR BOND PAPER UNDER TISSUE COVER'S.



CAREFULLY SHAPE TO SYMMETRICAL AIRFOIL, IN LIEU OF SHEETING MIGHT DOUBLE COVER OR USE BOND PAPER

- REFERENCES:
- 1- "BEEHCRAFT STAGGERWING" PETER BERRY, TAB BOOKS BLUE RIDGE SUMMIT, PA.
 - 2- AMT-1/48 SCALE PLASTIC KIT
 - 3- WM. A. WYLAM DRAWINGS USED AS BASIS FOR THIS PLAN ALONG WITH AEROMODELLER PLANS SERVICE DRWG BY G. A. G. COX
 - 4- FACTORY PHOTOS LOANED BY MR. BOYD CAMPBELL, OF WHICH NC 21934 IS SHOWN WITH MARKINGS AS DRAWN

THE MODEL GITS WAS THE FINAL DEVELOPMENT OF THE STAGGER WING BIPLANE LINE. PRODUCTION WAS FROM 1946 TO 1949 DURING WHICH 20 GITS MODELS WERE BUILT. THE POSTWAR ALL METAL BEECH MODEL, BANANZA, BROUGHT PRODUCTION OF STAGGERWING TO AN END.

GENERAL COLOR SCHEME NC 21934 OVERALL LOENING YELLOW, BLACK TRIM MARKINGS & REG NUMBERS, TAN LEATHER INTERIOR (MODEL DEPICTED), A SLIGHTLY MODIFIED COWL STRIPE APPEARS IN PHOTO PG. 35, REF #. FOR NC 21934, A DITS REPURCHASED BY BEECH IN 1945 & RE-ENGINEERED TO GITS. NC 80305, AMT 1/48 SCALE KIT - O.R. LOENING YELLOW, MODIFIED COWL STRIPES SIMILAR TO ABOVE NOTE, FUSELAGE/COWL STRIPES & WING REG NOS MEDIUM BLUE WITH RED PIN STRIPE OUTLINING, SILVER SPINNER, BLACK NOS ON RUDDER OTHER THAT YOU CAN DOCUMENT - YOUR OPTION.

FLYING SCALE INC
 1905 COLONY RD.
 METAIRIE, LA. 70003

BEEHCRAFT D17 STAGGERWING
 SCALE 3/4" = 1'-0"

PLAN B-1C
 SH2 OF 2