

FIRESTRIKE

DESIGNED BY
R.C. Povey
COPYRIGHT OF

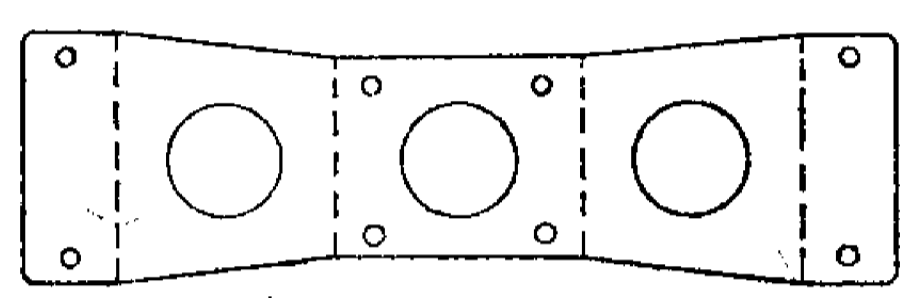
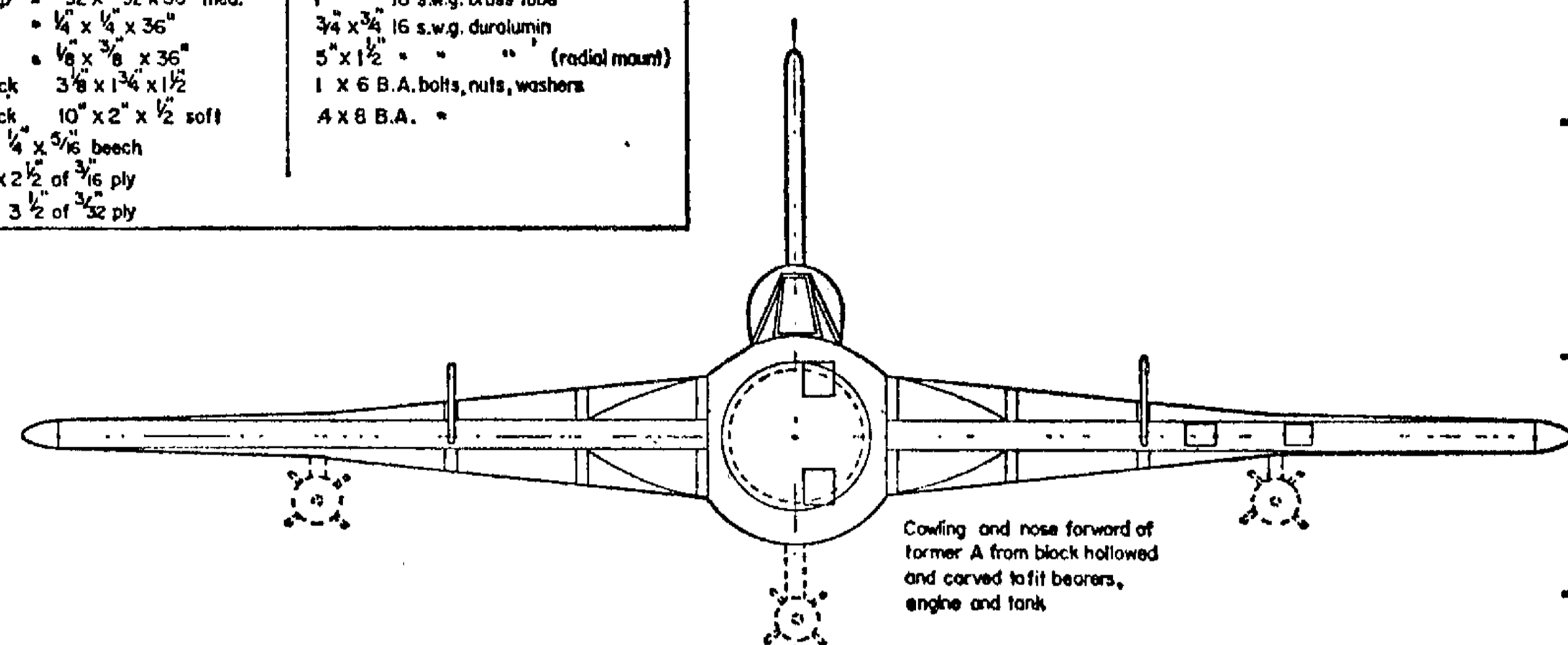
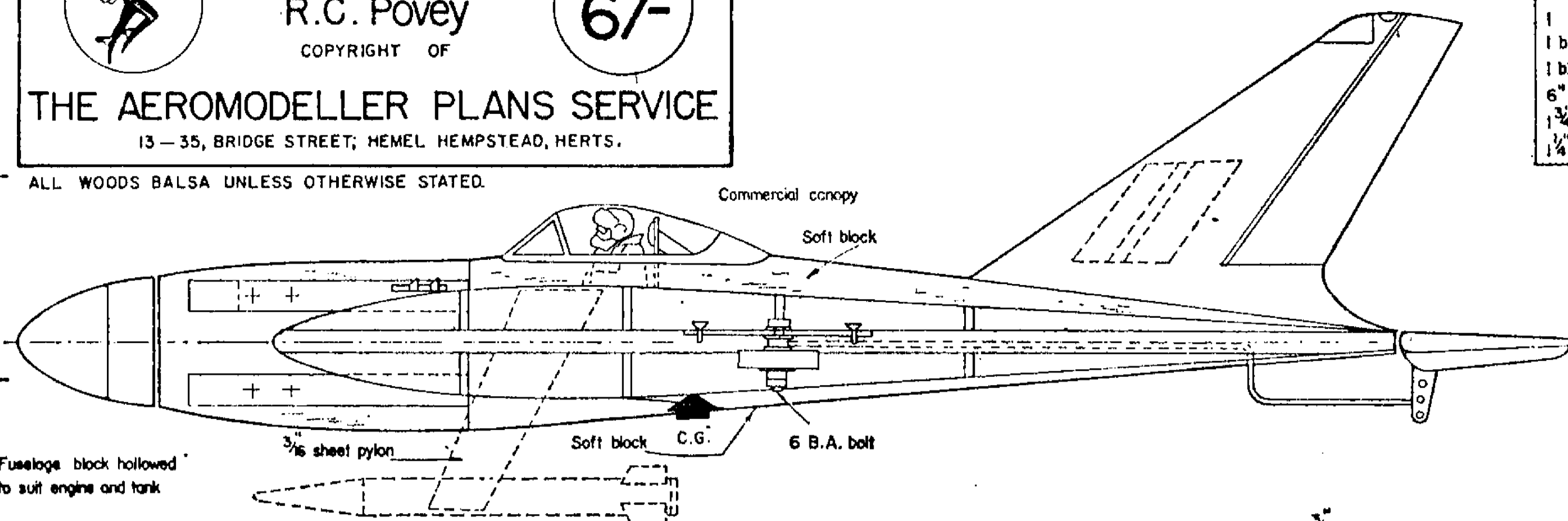
6/-

THE AEROMODELLER PLANS SERVICE

13-35, BRIDGE STREET, HEMEL HEMPSTEAD, HERTS.

ALL WOODS BALSA UNLESS OTHERWISE STATED.

Materials Required	
1 sheet of $\frac{1}{8} \times 3 \times 36$ "	1 piece 20 s.w.g. piano wire
1 strip $\frac{3}{32} \times 3 \times 36$ " med.	1 piece 18 s.w.g. brass tube
1 $\frac{1}{4} \times \frac{1}{4} \times 36$ "	$\frac{3}{4} \times \frac{3}{4} \times 16$ s.w.g. duralumin (radial mount)
1 $\frac{1}{8} \times \frac{3}{8} \times 36$ "	5 x 1/2 " " "
1 block $3 \frac{1}{8} \times 1 \frac{3}{4} \times 1 \frac{1}{2}$ "	1 x 6 B.A. bolts, nuts, washers
1 block $10 \times 2 \times \frac{1}{2}$ soft	4 x 8 B.A. "
6" x $\frac{1}{4}$ x $\frac{5}{16}$ beech	
1 $\frac{3}{4}$ x 2 $\frac{1}{2}$ of $\frac{3}{16}$ ply	
1 $\frac{1}{4}$ x 3 $\frac{1}{2}$ of $\frac{3}{32}$ ply	



Radial mount for Cox Babe Bee $\frac{1}{16}$ duralumin. Bend at broken line and bolt to former A.

